



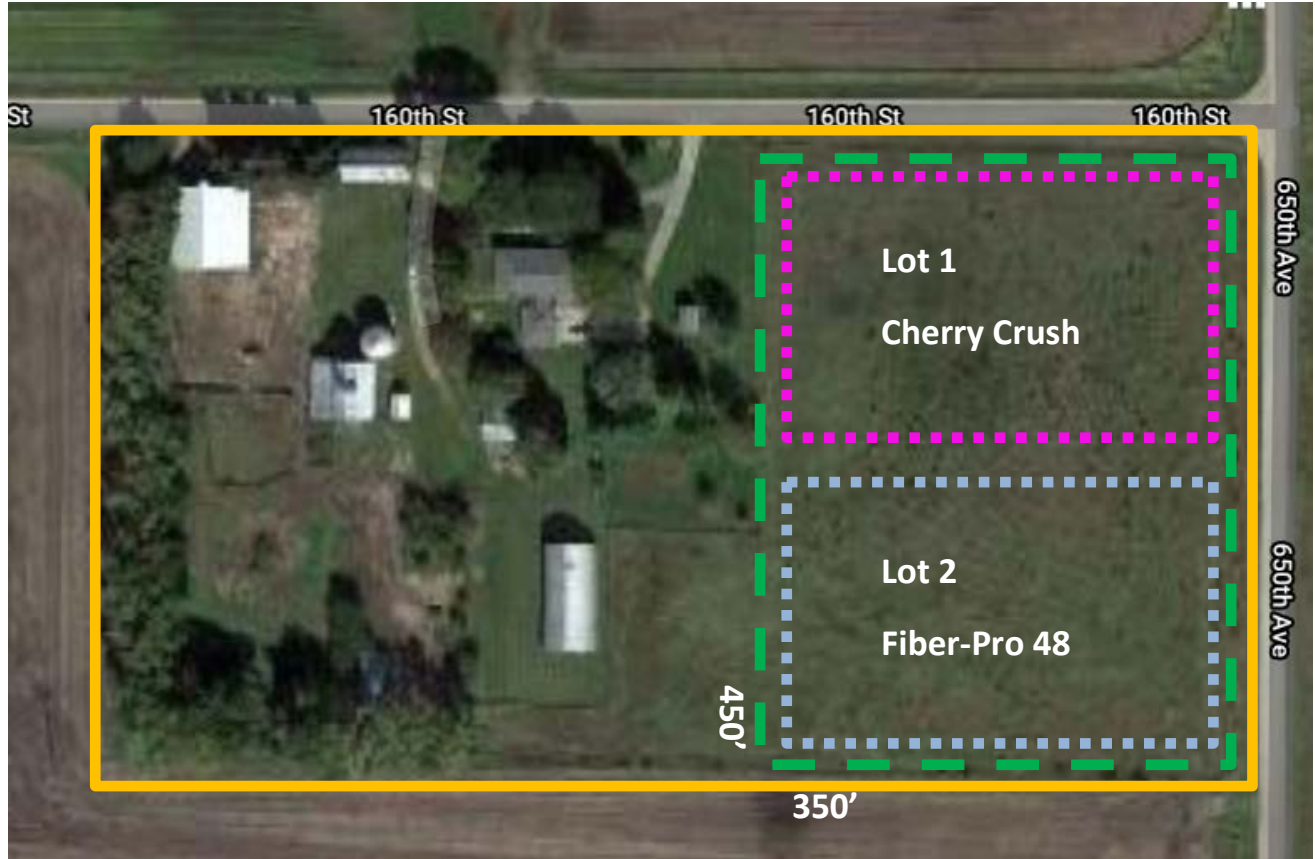


**Iowa Hemp License Application
EXAMPLE MAP**

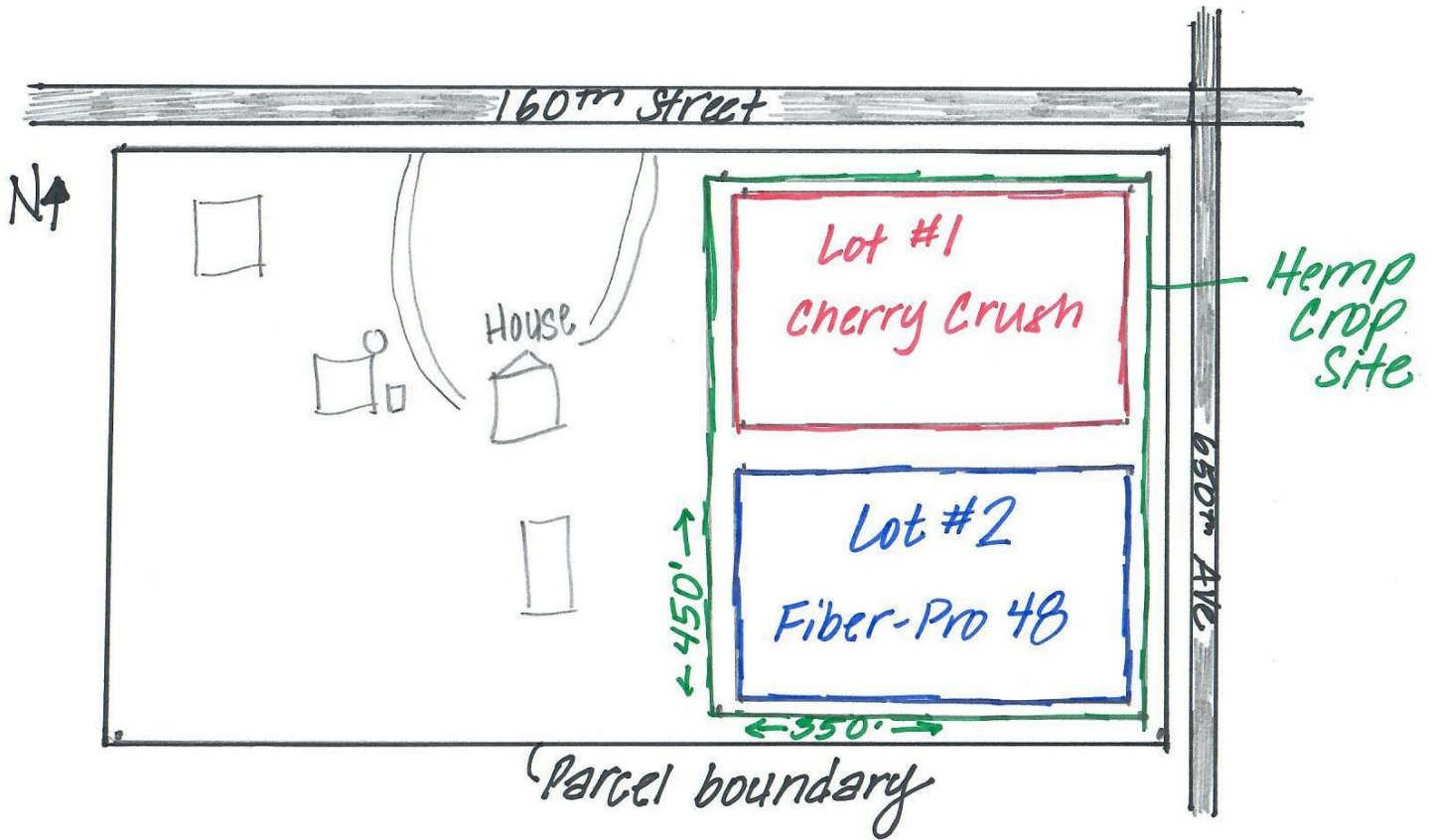
Each Hemp License application must submit a map - a diagram depicting all borders of the crop site including the nearest roads to aid in orientation, the cardinal direction north, and the boundaries of the legally described parcel in which the crop site is located. A map designating an outdoor crop site shall clearly indicate the names, or lot numbers, of all lots and planting locations. If multiple varieties, cultivars, or strains are planted, or if the crop site shall be subdivided into separate lots for the official laboratory test, the map shall indicate the lots and sub-lots with names of the varieties, cultivars, or strains.

EXAMPLE MAP #1:

KEY	
	Parcel Boundary
	Hemp Crop Site, 450' x 350'
	<i>variety</i> Cherry Crush, LOT 1
	<i>variety</i> Fiber-Pro 48, LOT 2



EXAMPLE MAP #2:



If you have any questions, please contact:
Iowa Department of Agriculture and Land Stewardship
Hemp Program
Hemp@IowaAgriculture.gov
(515) 725-1470