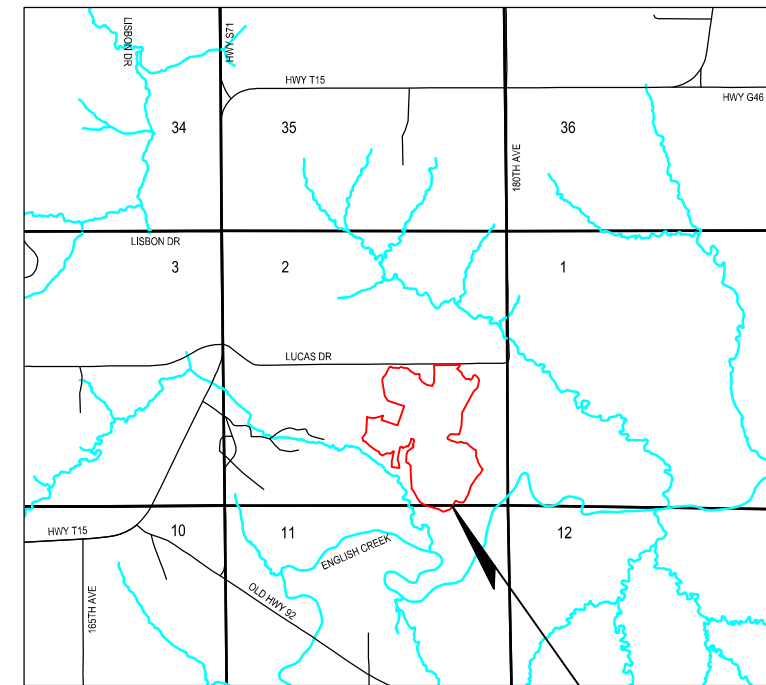
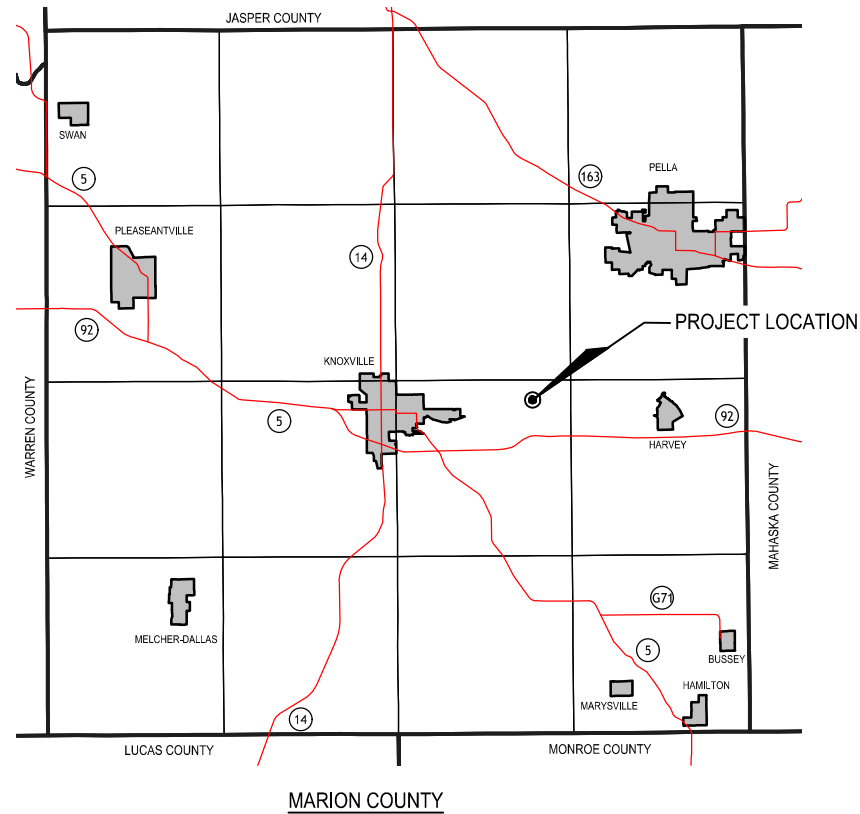
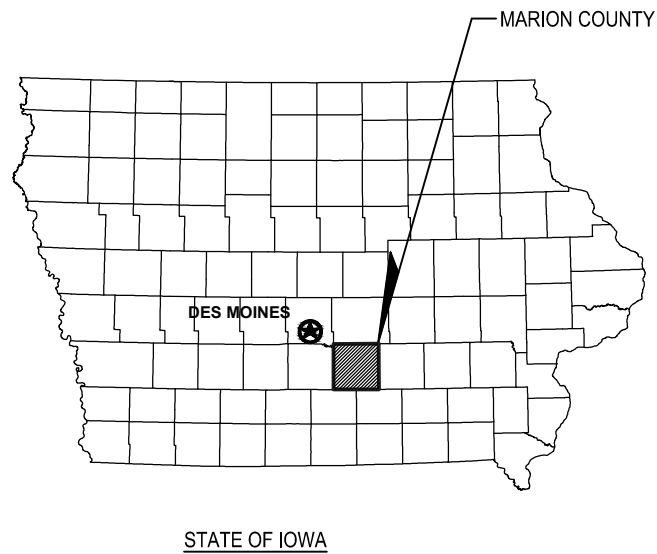


# KUIPER (IA-024) AML RECLAMATION PROJECT

SE ¼ SECTION 2, TOWNSHIP 75N, RANGE 19W, MARION COUNTY, IOWA  
IOWA DEPARTMENT OF AGRICULTURE AND LAND STEWARDSHIP  
DIVISION OF SOIL CONSERVATION AND WATER QUALITY

FUNDED BY:  
U.S. DEPARTMENT OF THE INTERIOR  
OFFICE OF SURFACE MINING RECLAMATION AND ENFORCEMENT  
GRANT NO: S23AF00089



PREPARED FOR:  
IOWA DEPARTMENT OF AGRICULTURE & LAND STEWARDSHIP  
DIVISION OF SOIL CONSERVATION AND WATER QUALITY  
HENRY A. WALLACE BUILDING  
502 E. 9TH STREET  
DES MOINES, IOWA 50319  
(515) 281-4246

ENGINEER:  
LT LEON ASSOCIATES, INC.  
1823 OHIO STREET, SUITE 101  
DES MOINES, IOWA 50314  
TEL: (515) 422-7016

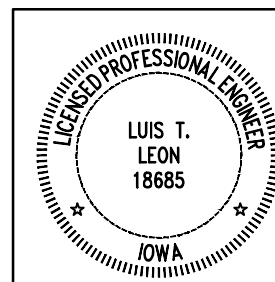
- INDEX OF SHEETS:
- 1 TITLE SHEET
  - 2 PROJECT NOTES, QUANTITIES AND LEGEND
  - 3 SITUATION PLAN
  - 4 GRADING PLAN - OVERALL
  - 5 GRADING PLAN - NORTH
  - 6 GRADING PLAN - SOUTH
  - 7 CUT AND FILL PLAN
  - 8 DRAINAGE PLAN
  - 9-13 TYPICAL DETAILS
  - 14-18 CROSS SECTIONS
  - 19 SWPPP DESCRIPTION
  - 20 RESTORATION AND SWPPP BMP PLAN



CALL 811 / 1-800-292-8989  
2 Working Days BEFORE YOU DIG  
DigSafeWait48.com

**DISCLAIMER:**

Reference to particular products, tradenames, or manufacturers is intended for clarity only and does not represent endorsement by the State of Iowa. Equivalent products or materials may be suitable, subject to the approval of the Engineer or Division.



I hereby certify that this engineering document was prepared by me or under my direct personal supervision and that I am a duly licensed Professional Engineer under the laws of the State of Iowa

Signature: *Luis T. Leon* Date: 07-08-2024

Name (printed or typed): LUIS T. LEON, P.E.

License Number: 18685

My license renewal date is: DECEMBER 31, 2025

Pages or sheets covered by this seal: ALL SHEETS

FILE: 049.012

REVISED:

ISSUED: 06-24-2024

CHKD. BY: LTL

DRAWN BY: SMH

DESIGN BY: SMH



IOWA DEPARTMENT OF AGRICULTURE AND LAND STEWARDSHIP  
DIVISION OF SOIL CONSERVATION AND WATER QUALITY  
HENRY A. WALLACE BUILDING  
502 E. 9th STREET, DES MOINES, IOWA 50319  
(515) 281-4246



KUIPER (IA-024)  
AML RECLAMATION PROJECT

TITLE SHEET

SHEET  
1 OF 20

**GENERAL NOTES:**

1. REFERENCES TO "DIVISION" SHALL MEAN "DIVISION OF SOIL CONSERVATION AND WATER QUALITY".
2. ALL IMPROVEMENTS SHOWN ON THESE PLANS SHALL COMPLY WITH THE GENERAL CONDITIONS, STANDARDS, AND SPECIFICATIONS SET FORTH IN PROJECT DOCUMENTS. THESE INCLUDE STANDARD CONSTRUCTION SPECIFICATIONS SET FORTH BY THE DIVISION OF SOIL CONSERVATION AND WATER QUALITY AS WELL AS THE SUPPLEMENTAL SPECIFICATIONS ESTABLISHED BY THE ENGINEER. SPECIFICATIONS OR STANDARDS INCORPORATED BY REFERENCE SHALL ALSO BE FOLLOWED.
3. THE CONTRACTOR SHALL BECOME FAMILIAR WITH THE DIVISION'S STANDARD SPECIFICATIONS AND THE ENGINEER'S SUPPLEMENTAL SPECIFICATIONS.
4. OWNERSHIP: THIS DOCUMENT, AND THE IDEAS AND DESIGN CONTAINED IN THIS DOCUMENT, ARE AN INSTRUMENT OF PROFESSIONAL SERVICE, AND MAY NOT BE USED, IN WHOLE OR IN PART, FOR ANY OTHER PROJECT WITHOUT THE WRITTEN CONSENT OF THE DIVISION OF SOIL CONSERVATION AND WATER QUALITY.
5. REFERENCES TO PARTICULAR PRODUCTS, TRADENAMES, OR MANUFACTURERS IS INTENDED FOR CLARITY ONLY AND DO NOT REPRESENT EXCLUSION OR ENDORSEMENT BY THE STATE OF IOWA. EQUIVALENT PRODUCTS OR MATERIALS MAY BE SUITABLE, SUBJECT TO THE APPROVAL OF THE ENGINEER.
6. CONTRACTOR SHALL PROVIDE AT LEAST 48 HOURS NOTICE TO THE ENGINEER AND DIVISION PRIOR TO COMMENCING CONSTRUCTION.
7. THE MEANS OF THE WORK AND THE SAFETY OF THE CONTRACTOR'S EMPLOYEES ARE SOLELY THE RESPONSIBILITY OF THE CONTRACTOR.
8. ANY WORK REQUIRED TO COMPLETE THE SCOPE OF THIS PROJECT BUT NOT SPECIFICALLY CALLED OUT, SHALL BE CONSIDERED INCIDENTAL TO THE PROJECT. NO ADDITIONAL COMPENSATION SHALL BE ALLOWED FOR THE COMPLETION OF THIS WORK.
9. ALL DEBRIS AND TRASH ENCOUNTERED DURING CONSTRUCTION WITHIN THE PROJECT LIMITS, OR DIRECTED BY THE ENGINEER, SHALL BE PROPERLY DISPOSED OF ACCORDING TO THE PROJECT REQUIREMENTS. IT IS THE CONTRACTOR'S RESPONSIBILITY TO OBSERVE EXISTING SITE CONDITIONS AND IDENTIFY ALL DEBRIS TO BE REMOVED.
10. CONTRACTOR IS RESPONSIBLE FOR ALL CONSTRUCTION DE-WATERING THAT IS REQUIRED.
11. REPAIR OR REPLACE DAMAGE TO EXISTING FACILITIES (TILE, UTILITIES, FENCES, ETC.) DESIGNATED TO REMAIN AT NO ADDITIONAL EXPENSE TO THE DIVISION.
12. THE CONTRACTOR SHALL KEEP ALL ROADS OPEN TO THROUGH TRAFFIC AT ALL TIMES.
13. NO TREES SHALL BE CLEARED BETWEEN THE DATES OF APRIL 1 TO SEPTEMBER 30.
14. SUBMIT MANUFACTURER'S CERTIFICATION AND MATERIAL DATA FOR ALL MATERIALS DELIVERED TO THE PROJECT SITE AS REQUIRED BY THE OWNER'S REPRESENTATIVE.
15. CONTRACTOR SHALL BE RESPONSIBLE FOR ALL DEPARTMENT OF NATURAL RESOURCES (DNR) NPDES PERMIT AND

STORM WATER POLLUTION PREVENTION PLAN (SWPPP) REQUIREMENTS AND REQUIRED CONTAINMENT STRUCTURES. THE DIVISION HAS OBTAINED THE DNR GENERAL PERMIT #2 FOR THE PROJECT AND A TEMPLATE SWPPP HAS BEEN PREPARED BY THE ENGINEER. CONTRACTOR SHALL DEVELOP, IMPLEMENT, MAINTAIN, AND UPDATE THE SWPPP AS REQUIRED TO MEET ALL LOCAL, STATE, AND FEDERAL REQUIREMENTS. REFER TO THE SWPPP AND SWPPP DRAWINGS FOR ADDITIONAL INFORMATION.

**UTILITY NOTES:**

1. IT SHALL BE THE RESPONSIBILITY OF THE CONTRACTOR TO PROTECT ALL EXISTING UTILITIES AND PUBLIC ROADWAYS, INCLUDING ANY NOT SHOWN ON THESE DRAWINGS. THE CONTRACTOR SHALL VERIFY ALL EXISTING UTILITIES PRIOR TO CONSTRUCTION AND NOTIFY THE ENGINEER IF ANY CONFLICTS WITH THE DRAWINGS OCCUR. ANY DAMAGE TO EXISTING UTILITIES AND/OR PAVED STREETS CAUSED BY TRENCHING AND GRADING OPERATIONS SHALL BE REPAIRED AT THE CONTRACTOR'S EXPENSE. EXISTING UTILITY LOCATIONS SHOWN ON THE DRAWINGS ARE APPROXIMATE.
2. UNDERGROUND FACILITIES, STRUCTURES, AND UTILITIES HAVE BEEN PLOTTED FROM AVAILABLE SURVEYS, PUBLIC RECORDS, AND FIELD INVESTIGATION. THEIR LOCATIONS SHALL BE CONSIDERED TO BE APPROXIMATE ONLY. IT IS THE RESPONSIBILITY OF THE CONTRACTOR TO CONTACT IOWA ONE-CALL AND/OR EACH UTILITY COMPANY FOR THE FIELD LOCATION(S) OF EXISTING UTILITY LINES IN OR NEARBY THE CONSTRUCTION AREA PRIOR TO BEGINNING ANY CONSTRUCTION.
3. THERE MAY BE ADDITIONAL PRIVATE OR OTHER UNDERGROUND UTILITIES NOT SHOWN OR KNOWN AT THE TIME OF THE PUBLICATION OF THIS DRAWING. IT IS THE CONTRACTOR'S RESPONSIBILITY TO DETERMINE THE EXISTENCE AND LOCATION OF ANY ADDITIONAL UNDERGROUND UTILITIES NOT SHOWN ON THIS DRAWING IN ORDER TO AVOID DAMAGE THERETO.
4. ALL OPEN UTILITY TRENCH EXCAVATION SHALL BE PROTECTED.

**CONSTRUCTION SURVEY NOTES:**

1. HORIZONTAL MEASUREMENTS ARE IN U.S. FEET. THIS DRAWING IS SET TO THE NAD 1983 IOWA STATE PLANE, SOUTH ZONE COORDINATE SYSTEM.
2. ELEVATION MEASUREMENTS ARE BASED UPON THE NAVD 1988 AND ARE IN U.S. FEET.
3. EXISTING TOPOGRAPHY SHOWN ON THIS DRAWING WAS DEVELOPED FROM LIDAR INFORMATION BY ENGINEER AND SUPPLEMENTAL TOPOGRAPHIC SURVEY DATA. LIDAR DATA WAS COLLECTED ON 2023-05-10. LOCAL CONTROL POINTS HAVE BEEN ESTABLISHED FOR THIS PROJECT. SEE SHEET 3. CONTRACTOR SHALL VERIFY SURVEY CONTROL AND EXISTING SURFACE PRIOR TO CONSTRUCTION. REFER TO SPECIFICATIONS.
4. SHOULD THERE EXIST SIGNIFICANT DIFFERENCES BETWEEN THE EXISTING ELEVATIONS SHOWN ON THE DRAWINGS AND THOSE REPORTED BY THE SURVEYING EQUIPMENT, THE CONTRACTOR SHALL DIRECT THEIR SURVEYOR TO CALIBRATE THE GPS INSTRUMENTS TO THE EXISTING ELEVATIONS SHOWN.
5. REPLACE ANY PROPERTY MONUMENTS REMOVED OR DESTROYED BY CONSTRUCTION. MONUMENTS SHALL BE SET BY A LAND SURVEYOR REGISTERED TO PRACTICE IN THE STATE OF IOWA.

# ESTIMATED QUANTITIES

ITEM NO.	DESCRIPTION	SPEC. SECTION	QUANTITY	UNIT
1	MOBILIZATION	02100	1	LS
2	SITE CLEARING AND PREPARATION	02100	80.6	ACRE
3	OFFSITE WASTE DISPOSAL	02100	10	TON
4	HYDRATED LIME	02110	1	TON
5	IMPOUNDMENT DISCHARGE	02110	1	LS
6	TEMPORARY EARTH DIVERSION BERM	02120	2,430	LF
7	WATTLE	02120	4,307	LF
8	FILTER SOCK, 12" DIA.	02120	240	LF
9	EXCAVATION	02200	682,120	CY
10	MACADAM STONE	02300	216	TON
11	RIPRAP, CLASS 'E'	02300	636	TON
12	TERRACES	02300	18,390	LF
13	RISER - TERRACE, 6"	02300	16	EA
14	RISER - TERRACE, 12"	02300	3	EA
15	RISER - TERRACE, 24"	02300	2	EA
16	NYLOPLAST BASIN, 24"	02300	2	EA
17	NYLOPLAST BASIN, 30"	02300	2	EA
18	OPEN SIDED AREA INTAKE, 4'X4'	02300	2	EA
19	DUAL WALL HDPE PIPE, 6"	02300	3,252	LF
20	PPHP PIPE, 12"	02300	438	LF
21	PPHP PIPE, 18"	02300	265	LF
22	PPHP PIPE, 24"	02300	852	LF
23	PPHP PIPE, 36"	02300	131	LF
24	PIPE OUTLET, 6"	02300	1	EA
25	AGRICULTURAL LIME, SUBGRADE, (40 TON ECCE/ACRE)	02400	3,112	TON ECCE
26	MULCH, SUBGRADE, (5 TONS/ACRE)	02400	77.8	ACRE
27	WETLAND UNDERCUT AND REPLACEMENT	02400	2.8	ACRE
28	AGRICULTURAL LIME, WETLAND SUBGRADE, (40 TON ECCE/ACRE)	02400	112	TON ECCE
29	MULCH, WETLAND SUBGRADE, (10 TONS/ACRE)	02400	2.8	ACRE
30	WETLAND FERTILIZER, NITROGEN (N), (30 LB./ACRE)	02400	84	POUND
31	FIELD FENCE	02500	2,248	LF
32	AGRICULTURAL LIME, SEEDING, (10 TON ECCE/ACRE)	02700	778	TON ECCE
33	NITROGEN (N), (50 LB./ACRE)	02700	3,890	POUND
34	PHOSPHOROUS (P), (100 LB./ACRE)	02700	7,780	POUND
35	POTASSIUM (K), (160 LB./ACRE)	02700	12,448	POUND
36	PASTURE SEEDING	02700	76.4	ACRE
37	WETLAND FRINGE SEEDING	02700	1.4	ACRE
38	MULCH, SEEDING (2 TONS/ACRE)	02700	77.8	ACRE

**PROJECT CONSTRUCTION NOTES:**

1. QUANTITIES OF FERTILIZER AND LIME ARE ESTIMATED FOR BIDDING PURPOSES. ACTUAL QUANTITIES APPLIED WILL BE DETERMINED BY SOIL TESTS.
2. CONTRACTOR IS RESPONSIBLE FOR ALL SURVEY LAYOUT AND CONTROL REQUIRED TO COMPLETE ALL WORK.
3. A SHRINKAGE FACTOR OF 15% WAS ESTIMATED FOR THIS PROJECT. THE CONTRACTOR SHALL MAKE CHANGES IN EARTHWORK AS NEEDED TO ADJUST FOR INACCURACIES INHERENT WITH ESTIMATING THE SHRINKAGE FACTOR. THESE CHANGES SHALL ONLY BE MADE AFTER CONSULTATION AND APPROVAL BY THE ENGINEER AND DIVISION. NO ADDITIONAL COMPENSATION SHALL BE GIVEN FOR ANY GRADE ADJUSTMENTS DUE TO DEVIATIONS OF SHRINKAGE FACTOR.
4. THE CONTRACTOR IS REQUIRED TO CONSTRUCT THE RECLAMATION SURFACE AS DEPICTED ON THE PLANS. SITE GRADING SHALL BE COMPLETED TO ± 0.3 FEET OF DESIGN ELEVATIONS. THE CONTRACTOR SHALL PROVIDE A GRADE CHECKER FOR SLOPE STAKING AND OFFSETS. THE USE OF GPS MACHINE MOUNTED GRADE CONTROL EQUIPMENT FOR FINISH GRADING IS RECOMMENDED. CONTOURS AND SPOT ELEVATIONS SHOWN ARE FINISHED GRADE.
5. BEYOND THE PROJECT LIMITS, NO WORK SHALL BE PERFORMED WITHOUT PRIOR AUTHORIZATION FROM THE DIVISION.
6. ACCESS TO THE SITE SHOULD BE LIMITED TO ONE ACCESS OFF OF LUCAS DRIVE AS SHOWN ON THE PLANS. BEFORE THE CLOSE OF THE PROJECT, THE CONTRACTOR SHALL REPAIR THE ACCESS ROAD TO ITS EXISTING CONDITION AND SEED THE AREA. QUANTITIES OF THE PERMANENT SEEDING ARE ESTIMATED FOR BIDDING PURPOSES AND INCLUDE THE SITE ACCESS AS SHOWN ON THE PLANS. IF THE CONTRACTOR REQUIRES ADDITIONAL SITE ACCESS, APPROVAL FROM THE ENGINEER AND DIVISION IS REQUIRED.

**SURVEY LEGEND**

- 810 --- EXISTING CONTOUR
- x - - - - - EXISTING FENCE
- — — — — STREAM CENTERLINE
- > — < — EXISTING CULVERT
- - - - - PROPERTY LINE
- — — — — SECTION LINE
- — — — — ROAD CENTERLINE
- NO—BURN — 1/4 MILE BURN RADIUS LIMIT LINE
- ⊗ EXISTING POWER POLE
- EXISTING FENCE POST
- ⊕ SURVEY CONTROL POINT

**PROPOSED LEGEND**

- 810 — PROPOSED CONTOUR
- ⋈ DEMO ITEM
- ○ — APPROVED SEDIMENT CONTROL MEASURE
- □ — TEMPORARY EARTH DIVERSION BERM
- — — — — PROJECT LIMITS
- ◇ — PROPOSED TERRACE RIDGE
- · PST · — PROPOSED STORM SEWER
- x — PROPOSED FIELD FENCE
- PROPOSED TERRACE RISER
- ⊗ 12" DIA. FILTER SOCK
- ⊕ RIPRAP OR MACADAM STONE
- CONSTRUCTED WETLAND
- ▨ STAGING AREA
- WETLAND FRINGE MIX SEEDING
- PASTURE MIX SEEDING

**UTILITY CONTACTS**

ONE CALL  
1-800-292-8989

INTERNET, CABLE, TELEPHONE: WINDSTREAM COMMUNICATIONS 3540 SW 61ST STREET DES MOINES, IA 50321 (800)289-1901	ELECTRIC: MIDAMERICAN 2411 N MARKET STREET OSKALOOSA, IA 52577 (515)281-2989
--	--

INTERNET, CABLE, TELEPHONE:  
MEDIACOM  
2205 INGERSOLL AVE  
DES MOINES, IA 50312  
(515)669-3647

WATER:  
MARION COUNTY RURAL WATER DISTRICT  
1921 W BELL AVE  
KNOXVILLE, IA 50138  
(641)842-3304

FILE: 049.012

REVISED: 06-24-2024

ISSUED: LTL

CHKD. BY: SMH

DRAWN BY: SMH

IOWA DEPARTMENT OF AGRICULTURE AND LAND STEWARDSHIP  
DIVISION OF SOIL CONSERVATION AND WATER QUALITY  
HENRY A. WALLACE BUILDING  
502 E. 9th STREET, DES MOINES, IOWA 50319  
(515)281-4246

**KUIPER (IA-024)**  
**AML RECLAMATION PROJECT**  
**PROJECT NOTES, QUANTITIES, AND LEGEND**

LITTLEON ASSOCIATES INC  
1823 9th STREET, SUITE 101  
DES MOINES, IOWA 50314  
office 515-422-7016  
www.littleon.com

**SHEET**  
2 OF 20



**TABLE 1: CONTROL POINTS COORDINATES**

POINT I.D.	NORTH (FT.)	EAST (FT.)	ELEV. (FT.)	FOUND OR SET?	SIZE/TYPE
CP 200	483657.474	1775726.716	815.529	SET	IRON ROD WITH PINK FLAG
CP 201	484261.608	1775474.311	843.843	SET	IRON ROD WITH PINK FLAG
CP 202	484036.221	1774042.224	807.252	SET	IRON ROD WITH PINK FLAG
CP 203	483387.725	1774182.751	777.143	SET	IRON ROD WITH PINK FLAG
CP 204	482285.265	1774617.180	733.988	SET	IRON ROD WITH PINK FLAG
CP 205	481756.171	1775541.880	743.977	SET	IRON ROD WITH PINK FLAG

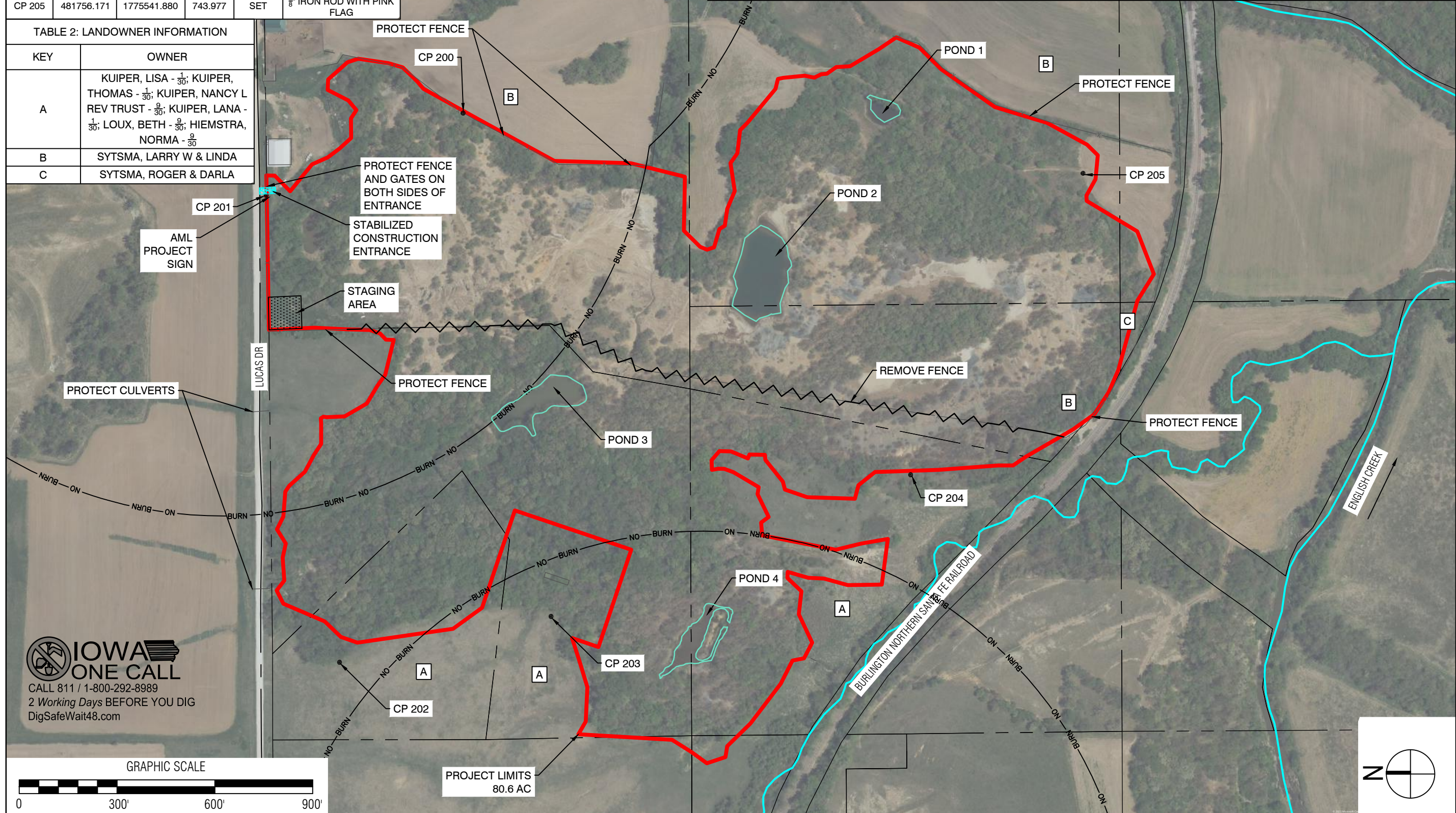
**TABLE 2: LANDOWNER INFORMATION**

KEY	OWNER
A	KUIPER, LISA - $\frac{1}{30}$ ; KUIPER, THOMAS - $\frac{1}{30}$ ; KUIPER, NANCY L REV TRUST - $\frac{2}{30}$ ; KUIPER, LANA - $\frac{1}{30}$ ; LOUX, BETH - $\frac{2}{30}$ ; HIEMSTRA, NORMA - $\frac{2}{30}$
B	SYTSMA, LARRY W & LINDA
C	SYTSMA, ROGER & DARLA

**TABLE 3: WATER BODY INFORMATION**

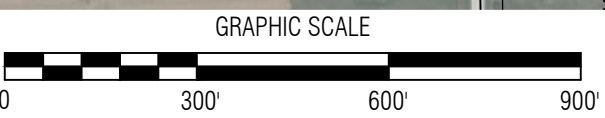
WATER BODY	WATER SURFACE ELEV. (FT)	EST. WATER SURFACE AREA (AC)	EST. MAX. WATER DEPTH (FT)	EST. AVG. MUCK DEPTH (FT)	FATE OF WATER BODY?	EST. WATER VOLUME (CUBIC FT)	ESTIMATED LIME (TON)	WATER QUALITY	
								pH	IRON (mg/L)
POND 1	754.00	0.11	1.60	1.60	TO BE FILLED	2,334	0.0	8.6	4.40
POND 2	769.80	0.86	9.40	4.10	TO BE FILLED	213,576	0.6	3.4	0.94
POND 3	770.60	0.55	11.00	5.40	TO BE FILLED	81,551	0.0	7.6	0.80
POND 4	742.19	0.30	1.50	1.40	TO BE FILLED	7,625	0.1	3.5	5.14

LAB TEST RESULTS FROM MAY 2023



PROJECT LIMITS  
80.6 AC

**IOWA ONE CALL**  
CALL 811 / 1-800-292-8989  
2 Working Days BEFORE YOU DIG  
DigSafeWait48.com



FILE: 049.012

REVISED: 06-24-2024

ISSUED: LTL

CHKD. BY: SMH

DRAWN BY: SMH

DESIGN BY: SMH

IOWA DEPARTMENT OF AGRICULTURE  
AND LAND STEWARDSHIP  
DIVISION OF SOIL CONSERVATION  
AND WATER QUALITY  
HENRY A. WALLACE BUILDING  
502 E. 9th STREET, DES MOINES, IOWA 50319  
(515)281-4246



**KUIPER (IA-024)  
AML RECLAMATION PROJECT**

**SITUATION PLAN**

SHEET  
**3** OF **20**

**LITTLEON**  
ASSOCIATES - INC  
office 515-472-7005  
www.littleon.com  
1823 OHIO STREET, SUITE 101  
DES MOINES, IOWA 50314



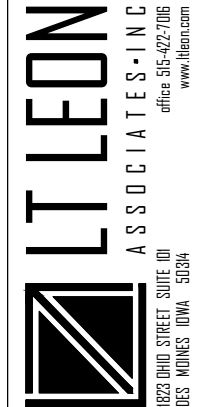


CALL 811 / 1-800-292-8989  
 2 Working Days BEFORE YOU DIG  
 DigSafeWait48.com

GRAPHIC SCALE



WATER BODY	WATER SURFACE ELEV. (FT)	EST. WATER SURFACE AREA (AC)	EST. MAX. WATER DEPTH (FT)	EST. WATER VOLUME (CUBIC FT)
W-1	736.00	2.03	8.00	118,845
W-2	745.00	0.79	5.00	36,650



1823 OHIO STREET, SUITE 101  
 DES MOINES, IOWA 50334  
 office 515-472-7005  
 www.littleon.com

IOWA DEPARTMENT OF AGRICULTURE  
 AND LAND STEWARDSHIP  
 DIVISION OF SOIL CONSERVATION  
 AND WATER QUALITY  
 HENRY A. WALLACE BUILDING  
 502 E. 9th STREET, DES MOINES, IOWA 50319  
 (515)281-4246



KUIPER (IA-024)  
 AML RECLAMATION PROJECT  
 GRADING PLAN - OVERALL

SHEET  
**4** OF **20**

FILE: 049.012

REVISED:

06-24-2024

ISSUED:

LTL

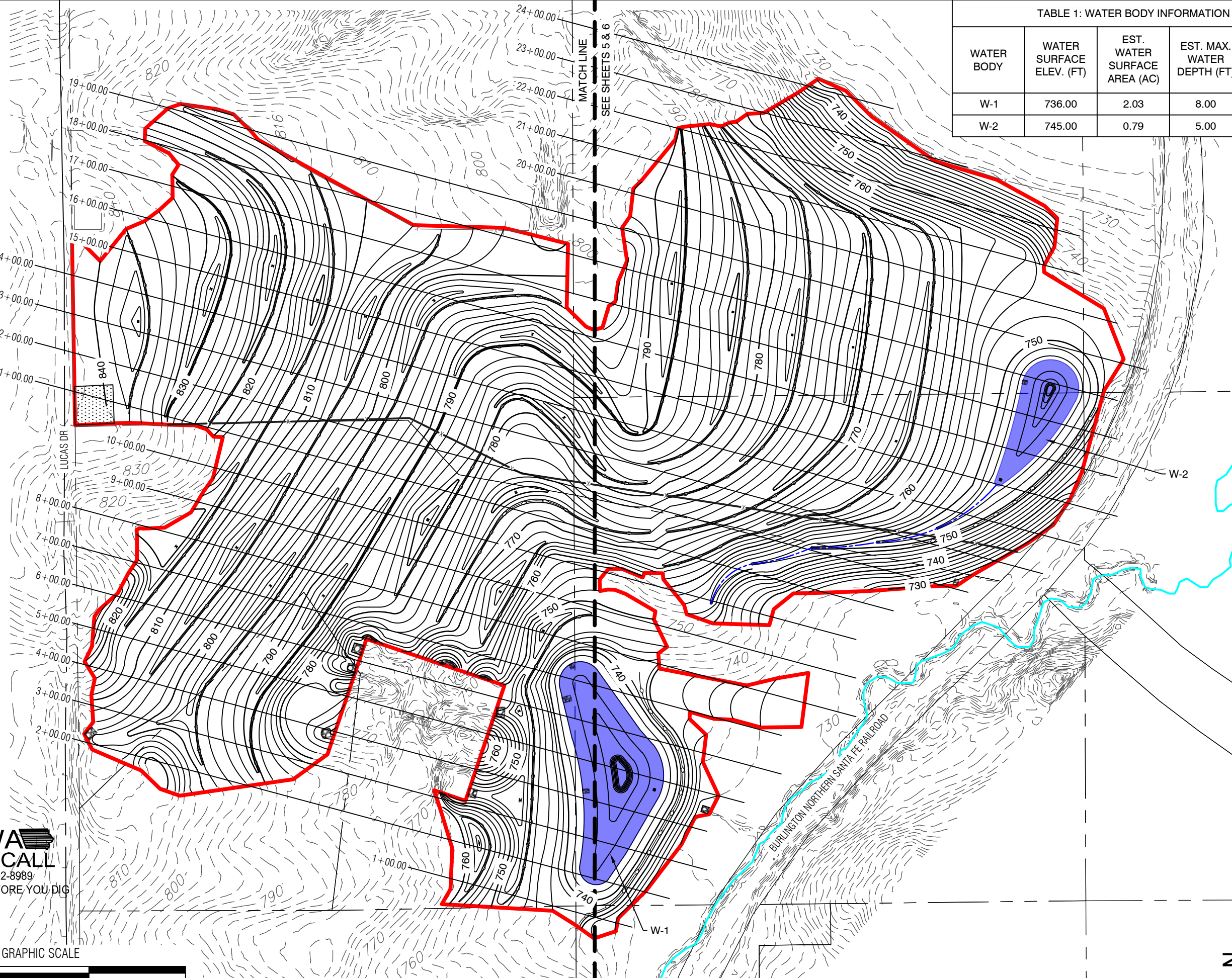
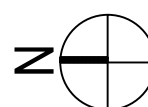
CHKD. BY:

SMH

DRAWN BY:

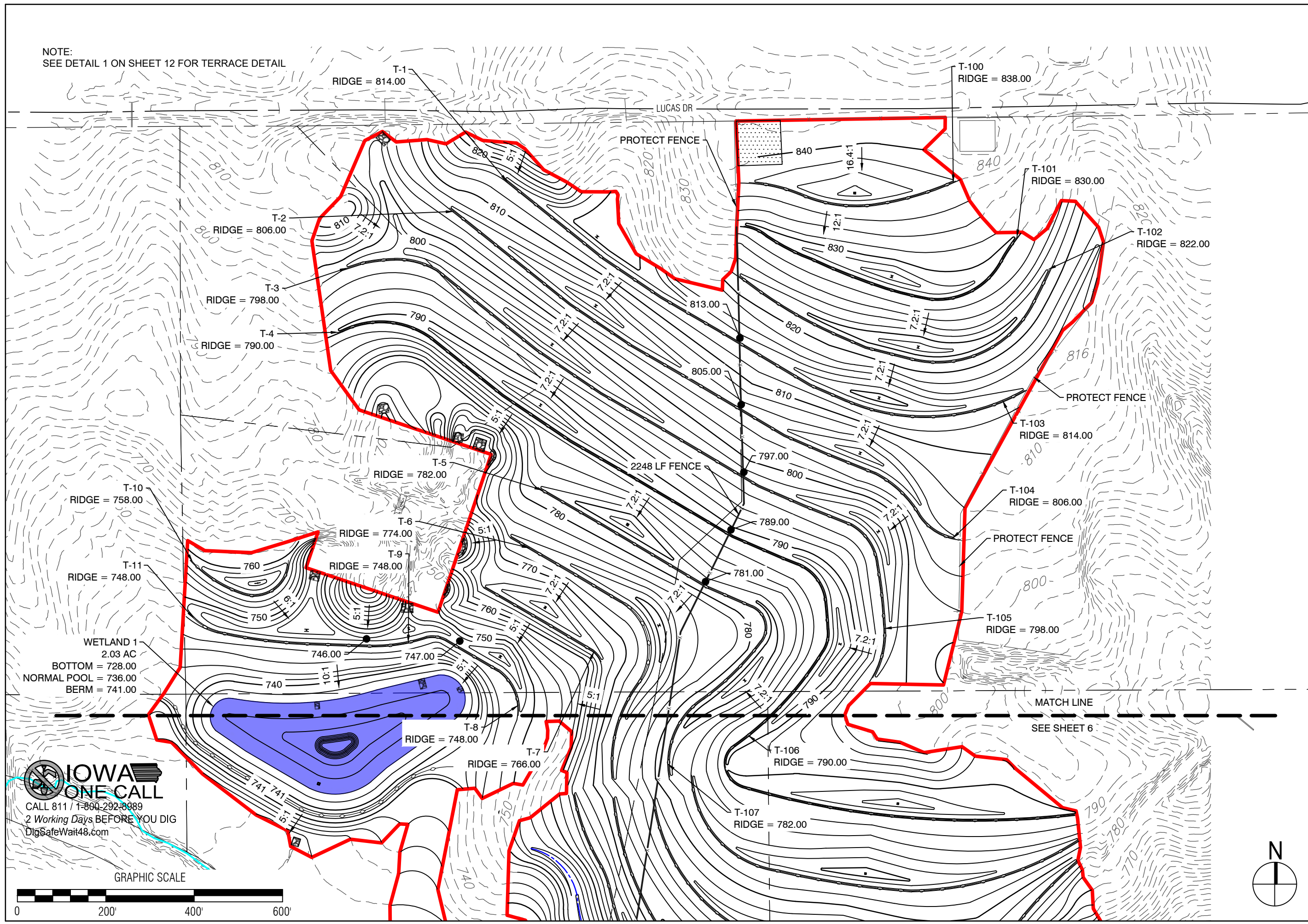
SMH

DESIGN BY:

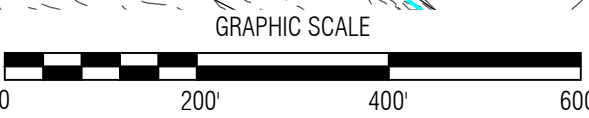




NOTE:  
SEE DETAIL 1 ON SHEET 12 FOR TERRACE DETAIL



**IOWA ONE CALL**  
CALL 811 / 1-800-292-8989  
2 Working Days BEFORE YOU DIG  
DigSafeWait48.com



FILE: 049.012

REVISED: 06-24-2024

ISSUED: LTL

CHKD. BY: SMH

DRAWN BY: SMH

DESIGN BY: SMH

IOWA DEPARTMENT OF AGRICULTURE  
AND LAND STEWARDSHIP  
DIVISION OF SOIL CONSERVATION  
AND WATER QUALITY  
HENRY A. WALLACE BUILDING  
502 E. 9th STREET, DES MOINES, IOWA 50319  
(515)281-4246

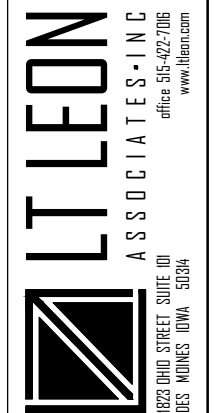
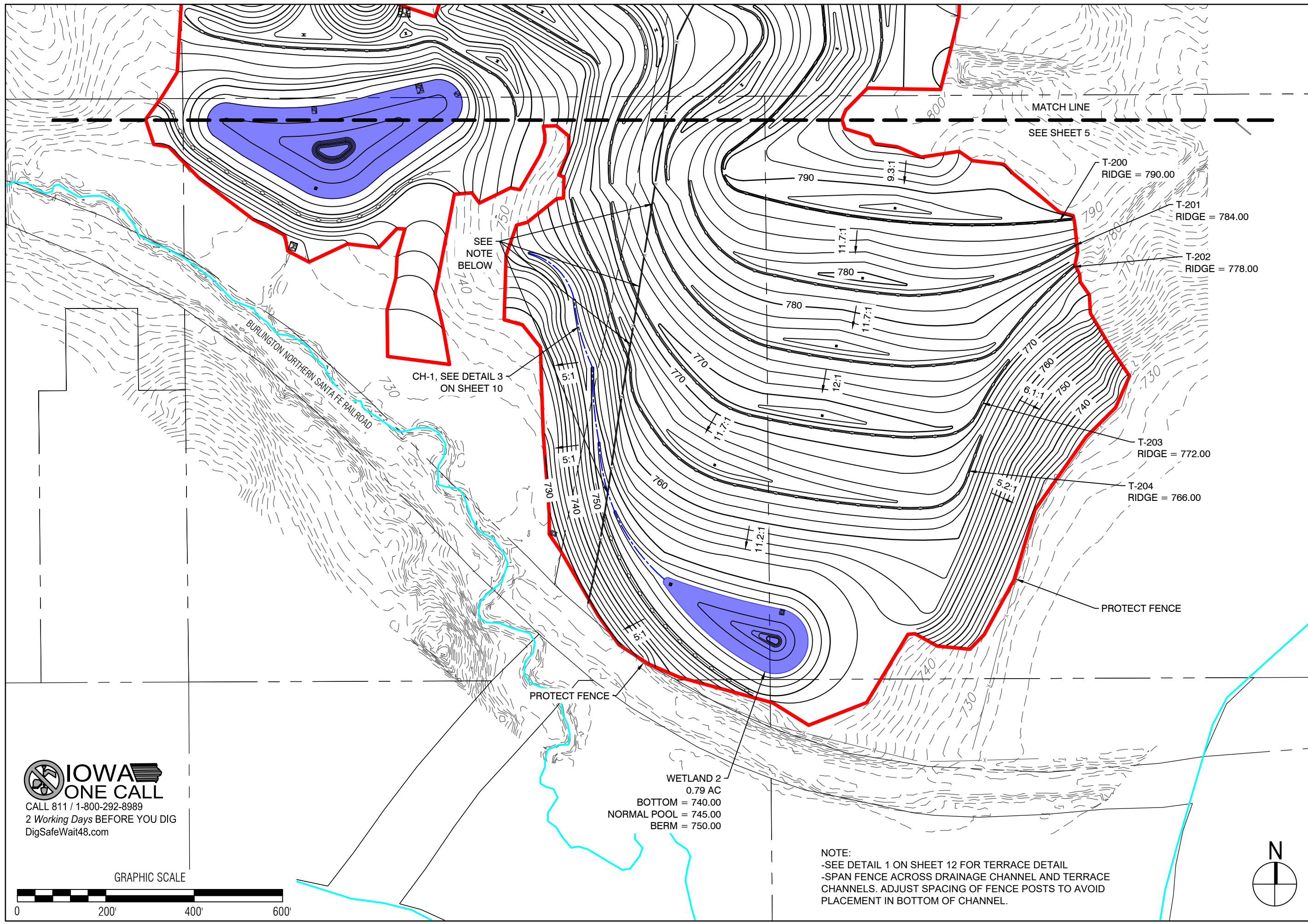


**KUIPER (IA-024)**  
**AML RECLAMATION PROJECT**  
**GRADING PLAN - NORTH**

SHEET  
**5** OF **20**

**LT LEON**  
ASSOCIATES - INC  
office 515-422-7005  
www.ltleon.com  
1823 9th STREET, SUITE 101  
DES MOINES, IOWA 50314





FILE: 049.012

IOWA DEPARTMENT OF AGRICULTURE  
AND LAND STEWARDSHIP  
DIVISION OF SOIL CONSERVATION  
AND WATER QUALITY  
HENRY A. WALLACE BUILDING  
502 E. 9th STREET, DES MOINES, IOWA 50319  
(515)281-4246



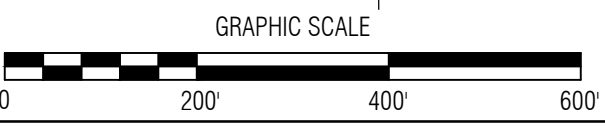
DESIGN BY: SMH  
DRAWN BY: SMH  
CHKD. BY: LTL  
ISSUED: 06-24-2024  
REVISED:

KUIPER (IA-024)  
AML RECLAMATION PROJECT

GRADING PLAN - SOUTH

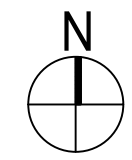
SHEET  
**6** OF **20**

**IOWA ONE CALL**  
CALL 811 / 1-800-292-8989  
2 Working Days BEFORE YOU DIG  
DigSafeWait48.com



WETLAND 2  
0.79 AC  
BOTTOM = 740.00  
NORMAL POOL = 745.00  
BERM = 750.00

NOTE:  
-SEE DETAIL 1 ON SHEET 12 FOR TERRACE DETAIL  
-SPAN FENCE ACROSS DRAINAGE CHANNEL AND TERRACE CHANNELS. ADJUST SPACING OF FENCE POSTS TO AVOID PLACEMENT IN BOTTOM OF CHANNEL.





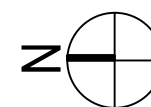
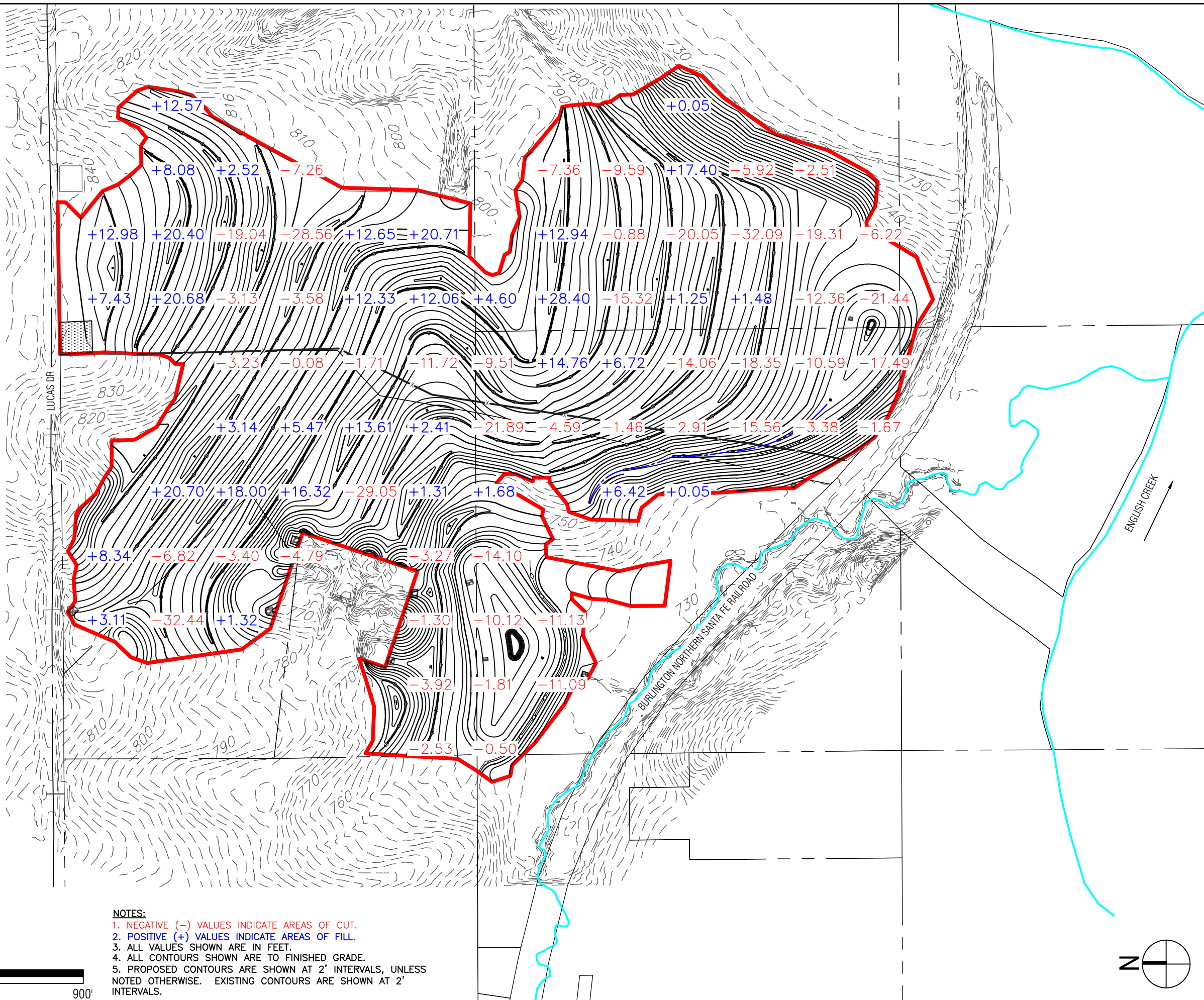


CALL 811 / 1-800-292-8989  
 2 Working Days BEFORE YOU DIG  
 DigSafeWait48.com



**NOTES:**

1. NEGATIVE (-) VALUES INDICATE AREAS OF CUT.
2. POSITIVE (+) VALUES INDICATE AREAS OF FILL.
3. ALL VALUES SHOWN ARE IN FEET.
4. ALL CONTOURS SHOWN ARE TO FINISHED GRADE.
5. PROPOSED CONTOURS ARE SHOWN AT 2' INTERVALS, UNLESS NOTED OTHERWISE. EXISTING CONTOURS ARE SHOWN AT 2' INTERVALS.



DESIGN BY: SMH    DRAWN BY: SMH    CHKD. BY: LTL    ISSUED: 06-24-2024    REVISED:    FILE: 049.012

**KUIPER (IA-024)**  
**AML RECLAMATION PROJECT**  
**CUT AND FILL PLAN**

IOWA DEPARTMENT OF AGRICULTURE  
 AND LAND STEWARDSHIP  
 DIVISION OF SOIL CONSERVATION  
 AND WATER QUALITY  
 HENRY A. WALLACE BUILDING  
 502 E. 9th STREET, DES MOINES, IOWA 50319  
 (515)281-4246

