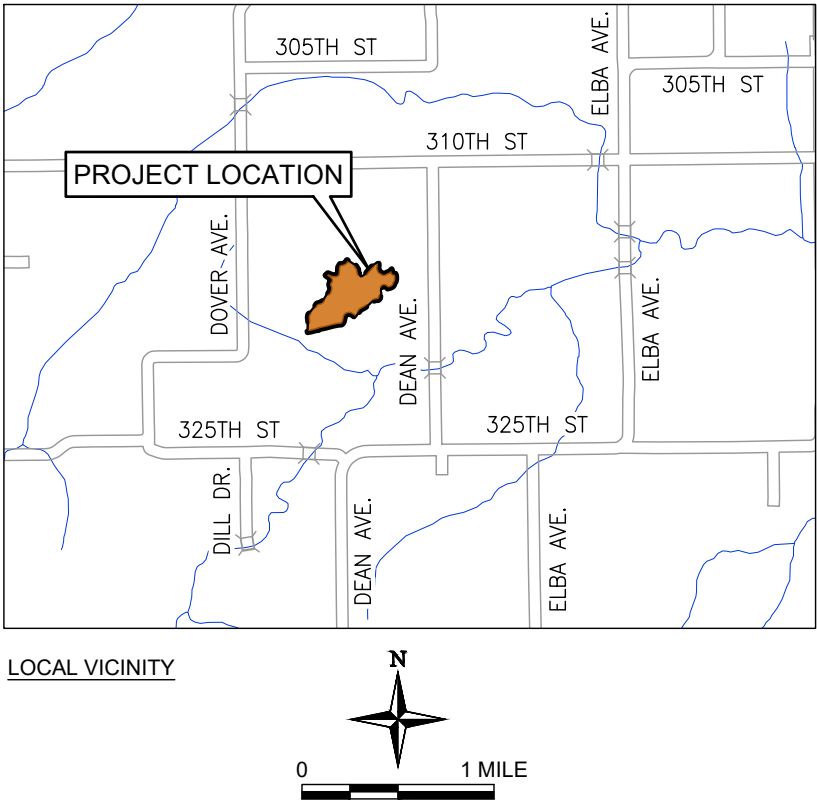
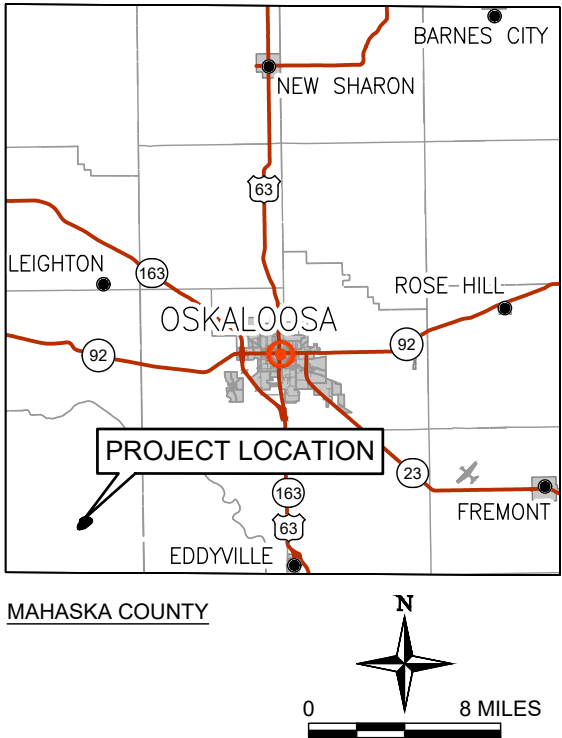
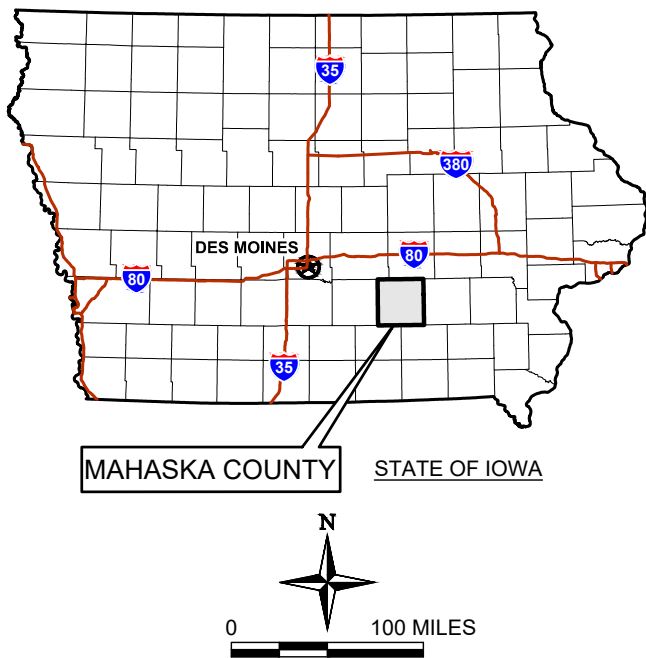


NORTH KING (IA-048)

AML RECLAMATION PROJECT

SECTION 22, TOWNSHIP 74 NORTH, RANGE 17 WEST, MAHASKA COUNTY, IOWA
IOWA DEPARTMENT OF AGRICULTURE AND LAND STEWARDSHIP
DIVISION OF SOIL CONSERVATION AND WATER QUALITY

FUNDED BY:
U.S. DEPARTMENT OF THE INTERIOR
OFFICE OF SURFACE MINING RECLAMATION AND ENFORCEMENT
GRANT NO: S24AF00083



CALL 811 / 1-800-292-8989
2 Working Days BEFORE YOU DIG
IowaOneCall.com

PREPARED FOR:
IOWA DEPARTMENT OF AGRICULTURE & LAND STEWARDSHIP
DIVISION OF SOIL CONSERVATION AND WATER QUALITY
HOOVER STATE BUILDING
1305 E WALNUT ST
DES MOINES, IOWA 50319
(515) 281-4246

ENGINEER:
TRIHYDRO CORPORATION
1252 COMMERCE DRIVE
LARAMIE, WYOMING 82070
www.trihydro.com
(P) 307/745.7474 (F) 307/745.7729

#	SHEET TITLE
1	COVER SHEET
2	PROJECT NOTES LEGEND AND QUANTITIES
3	SITE OVERVIEW AND CONTROL
4	SITE SITUATION PLAN AND FEATURES
5	GRADING PLAN OVERVIEW
6	DRAINAGE AND GRADING PLAN
7	GRADING - CUT-FILL ISOMAP
8	PROJECT SIGNAGE DETAILS
9	RIPRAP LETDOWN AND WETLAND INLET & OUTLET DETAILS
10	TYPICAL TERRACE DETAILS
11	LOW WATER CROSSING DETAILS
12	CROSS SECTIONS 1 OF 2
13	CROSS SECTIONS 2 OF 2
14	MAIN CHANNEL PROFILES
15	SWPPP NOTES
16	SWPPP BMP PLAN



I hereby certify that this engineering document was prepared by me or under my direct personal supervision and that I am a duly licensed Professional Engineer under the laws of the State of Iowa

Signature: *Kelby Wilkison* Date: 8 / 28 / 2025

Name (printed or typed): KELBY C. WILKISON

License Number: 27318

My license renewal date is: 12/31/2025

Pages or sheets covered by this seal: ENTIRE DOCUMENT

FILE: 014-NORTHKING_1-C_COVER

CHKD. BY: KCW ISSUED: 8/15/2025 REVISED: 8/15/2025

DESIGN BY: BK DRAWN BY: CD



IOWA DEPARTMENT OF AGRICULTURE
AND LAND STEWARDSHIP
DIVISION OF SOIL CONSERVATION AND
WATER QUALITY
HOOVER STATE BUILDING
1305 E WALNUT ST. DES MOINES, IA 50319
(515) 281-4246

NORTH KING (IA-048)
AML RECLAMATION PROJECT

COVER SHEET



TRIHYDRO CORPORATION
1252 COMMERCE DRIVE
LARAMIE, WYOMING 82070
www.trihydro.com
(P) 307/745.7474 (F) 307/745.7729

GENERAL NOTES:

1.

ALL IMPROVEMENTS SHOWN ON THESE PLANS SHALL COMPLY WITH THE GENERAL CONDITIONS, STANDARDS, AND SPECIFICATIONS SET FORTH IN PROJECT DOCUMENTS. THESE INCLUDE STANDARD CONSTRUCTION SPECIFICATIONS SET FORTH BY THE DIVISION OF SOIL CONSERVATION AND WATER QUALITY (DIVISION) AS WELL AS THE SUPPLEMENTAL SPECIFICATIONS ESTABLISHED BY THE ENGINEER. SPECIFICATIONS OR STANDARDS INCORPORATED BY REFERENCE SHALL ALSO BE FOLLOWED.
2.

OWNERSHIP: THIS DOCUMENT AND THE IDEAS AND DESIGN CONTAINED IN THIS DOCUMENT, ARE AN INSTRUMENT OF PROFESSIONAL SERVICE, AND MAY NOT BE USED, IN WHOLE OR IN PART, FOR ANY OTHER PROJECT WITHOUT THE WRITTEN CONSENT OF THE DIVISION.
3.

REFERENCES TO PARTICULAR PRODUCTS, TRADENAMES, OR MANUFACTURERS IS INTENDED FOR CLARITY ONLY AND NOT TO REPRESENT EXCLUSION OR ENDORSEMENT BY THE STATE OF IOWA. EQUIVALENT PRODUCTS OR MATERIALS MAY BE SUITABLE, SUBJECT TO THE APPROVAL OF THE ENGINEER.
4.

THE CONTRACTOR SHALL NOT DISTURB AREAS OUTSIDE THE CONSTRUCTION LIMITS. THE CONTRACTOR SHALL RECLAIM OR REPAIR ALL DISTURBANCES CREATED OUTSIDE THE CONSTRUCTION LIMITS BY THE CONTRACTOR'S EMPLOYEES OR SUBCONTRACTORS AT THE CONTRACTOR'S EXPENSE.
5.

THE CONTRACTOR SHALL ACCESS THE SITE FROM DOVER AVE. VIA THE LOCATION INDICATED ON THE PLANS FOR ALL EQUIPMENT, PERSONNEL, AND MATERIALS TRANSPORTATION. IF ANY NEW ACCESS OR HAUL ROADS ARE REQUIRED TO COMPLETE THE WORK, THEY SHALL FIRST BE APPROVED IN WRITING BY THE ENGINEER OR DIVISION, AND SHALL BE RECLAIMED ACCORDING TO THE SPECIFICATIONS AT THE COMPLETION OF THE PROJECT.
6.

ALL TRASH AND DEBRIS GENERATED BY THE CONTRACTOR SHALL BE DISPOSED OF IN A LICENSED AND PERMITTED OFF-SITE LANDFILL. TRASH SHALL NOT BE BURIED ON-SITE.
7.

EXISTING SITE TOPOGRAPHY WAS DEVELOPED USING ELEVATION DATA FROM THE STATE OF IOWA'S LIGHT DETECTION AND RANGING (LIDAR) PROGRAM, AND SUPPLEMENTED BY AN ADDITIONAL SURVEY COMPLETED BY SHIVE-HATTERY IN MARCH AND APRIL 2024. THE DRAWINGS DO NOT PURPORT TO SHOW ALL OBJECTS EXISTING ON, ABOVE, OR AROUND THE SITE.

SAFETY NOTE:

THIS PROJECT REQUIRES CONSTRUCTION WORK IN THE VICINITY OF HISTORIC MINE SITES, HIGHWALLS, AND WATER BODIES. THE CONTRACTOR SHALL BE RESPONSIBLE FOR INVESTIGATING THE SITE CONDITIONS AND SCHEDULING THEIR EQUIPMENT, OPERATIONS, PERSONNEL, AND SAFETY PROCEDURES TO PREVENT ACCIDENTS AND INJURIES. THE CONTRACTOR SHALL FOLLOW ALL APPLICABLE OSHA REGULATIONS.

SPECIAL NOTES:

1.

QUANTITIES OF FERTILIZER AND LIME ARE ESTIMATED FOR BIDDING PURPOSES.
2.

ACTUAL QUANTITIES APPLIED WILL BE DETERMINED BY SOIL TESTS PERFORMED AT THE COMPLETION OF SITE GRADING WORK.

UTILITY NOTES:

1.

THE CONTRACTOR SHALL CALL 800-292-8989 OR 811 PRIOR TO INTRUSIVE ACTIVITIES TO LOCATE ON-SITE UTILITIES. CONTRACTOR IS RESPONSIBLE FOR LOCATING ALL UTILITIES. THE ENGINEER DOES NOT MAKE ANY REPRESENTATIONS AS TO EXISTENCE OR NON-EXISTENCE OF UTILITIES WITHIN THE PROJECT AREA.
2.

CONTRACTOR SHALL PROTECT ALL EXISTING UTILITIES AND PUBLIC ROADWAYS, INCLUDING ANY NOT SHOWN ON THESE DRAWINGS. ANY DAMAGE TO EXISTING UTILITIES AND STREETS CAUSED BY TRENCHING AND GRADING OPERATIONS SHALL BE REPAIRED AT THE CONTRACTOR'S EXPENSE.

ESTIMATED QUANTITIES			
ITEM NO.	ITEM	QUANTITY	UNIT
SECTION 02100: MOBILIZATION, SITE CLEARING & PREPERATION			
1	MOBILIZATION	1	LS
2	SITE CLEARING & PREPARATION	53	ACRE
3	OFF-SITE WASTE DISPOSAL	1	TON
SECTION 02110: IMPOUNDMENT			
4	IMPOUNDMENT DISCHARGE	1	LS
5	CAUSTIC SODA, LIQUID, 20-25%	35	GALLONS
SECTION 02120: SEDIMENT & EROSION CONTROL			
6	WATTLES/SEDIMENT CONTROLS	1,880	LF
7	TIED CONCRETE BLOCK MAT	8,800	SF
8	TEMPORARY EARTH DIVERSION	745	LF
9	STABILIZED CONSTRUCTION ENTRANCE	30	TON
SECTION 02200: EARTHWORK, ROUGH GRADING			
10	EXCAVATION	429,000	CY
11	FINISH GRADING	55.5	ACRE
SECTION 02300: DRAINAGE SYSTEMS, GENERAL			
12	RIPRAP (CLASS E)	1,583	TON
13	GRANULAR BEDDING	669	TON
14	TERRACE	9,315	LF
15	RISER-TERRACE (6-INCH)	9	EACH
16	RISER-TERRACE (8-INCH)	12	EACH
17	RISER-TERRACE (10-INCH)	1	EACH
18	PIPE, 8-INCH DUAL WALL, HDPE (DWPE)	5,830	LF
19	PIPE, 10-INCH DUAL WALL, HDPE (DWPE)	1,258	LF
20	PIPE, 12-INCH DUAL WALL, HDPE (DWPE)	677	LF
21	PIPE, 15-INCH DUAL WALL, HDPE (DWPE)	86	LF
22	PIPE OUTLET (8-INCH)	1	EACH
23	PIPE OUTLET (10-INCH)	1	EACH
24	PIPE OUTLET (12-INCH)	2	EACH
25	PIPE OUTLET (15-INCH)	1	EACH
SECTION 02400: SUBGRADE PREPERATION (WITHOUT COVER MATERIAL)			
26	AG LIME, SUBGRADE, 40 TONS ECCE/ACRE	2,268	TON (ECCE)
27	MULCH, SUBGRADE, 5 TONS/AC	56.7	ACRE
28	WETLAND FERTILIZER, 30 POUNDS/ACRE	99	POUND
29	WETLAND UNDERCUT & REPLACEMENT	3.3	ACRE
SECTION 02500: FENCING			
30	WOOD POSTS, FIELD FENCE - NO FENCE	200	EACH
SECTION 02700: SEEDING			
31	AG LIME, SEEDING, 10 TONS ECCE/AC	567	TON (ECCE)
32	NITROGEN (N)	2,268	POUND
33	PHOSPHOROUS (P)	5,670	POUND
34	POTASSIUM (K)	9,072	POUND
35	UPLAND SEEDING	50.4	ACRE
36	POLLINATOR MIX SEEDING	0.6	ACRE
37	MULCH, SEEDING, 2 TONS/AC	56.7	ACRE
38	WETLAND FRINGE SEEDING	5.7	ACRE

CONSTRUCTION NOTES:

1.

THE CONTRACTOR SHALL NOT REMOVE OR DESTROY ANY SURVEY MONUMENTS WITHOUT PRIOR WRITTEN PERMISSION FROM THE ENGINEER.
2.

THE CONTRACTOR IS REQUIRED TO CONSTRUCT THE RECLAMATION SURFACE AS DEPICTED ON THE PLANS. SITE GRADING SHALL BE COMPLETED TO ± 0.3 FEET OF DESIGN ELEVATIONS. THE CONTRACTOR SHALL PROVIDE A GRADE CHECK FOR SLOPE STAKING AND OFFSETS. THE USE OF GPS MACHINE MOUNTED GRADE CONTROL EQUIPMENT FOR FINISH GRADING IS RECOMMENDED.
3.

PROPOSED CONTOURS AND GRADES DEPICT THE TOP OF THE FINISH GRADE.
4.

IN AREAS WHERE PROPOSED GRADING DAYLIGHTS TO EXISTING GROUND, THE CONTRACTOR SHALL CONSTRUCT A SMOOTH TRANSITION BOTH VERTICALLY AND HORIZONTALLY.

LEGEND

EXISTING		PROPOSED	
	CONTROL POINT AND DESIGNATION		TILE RISER/INTAKE
	UTILITY POLE		TILE OUTLET AND POOL
	FENCE POST		SIGN POST
	TILE RISER/INTAKE		CONTOURS (2' INTERVAL, 10' INDEX)
	TILE OUTLET		WOOD POST (10' O.C.) ON THE PROPERTY LINE
	SIGN		MAIN CHANNEL
	INTERSTATE HIGHWAY		TERRACE FLOW LINE
	US HIGHWAY		TERRACE RIDGE LINE
	STATE HIGHWAY		TILE PIPE
	COUNTY ROAD		EXISTING TILE PIPE EXTENSION
	CULVERT		EARTHWORK SECTION/PROFILE
	WETLAND WATER LEVEL		WATTLES
	SURFACE CONTOURS (2' INTERVAL, 10' INDEX)		BURN LIMIT RADIUS
	SURVEYED EXISTING SITE ROADWAY		LOW-WATER CROSSING
	TILE PIPE ALIGNMENT		RIPRAP STRUCTURES
	EXISTING STREAM		STAGING AREA
	MAPPED EROSION		STABILIZED CONSTRUCTION ENTRANCE
	PROPERTY LINE		PROJECT LIMITS
	SECTION LINE		GRADING LIMTS
	WATER BODY		POLLINATOR SEED MIX
	SITE ACCESS ROUTE		PROPOSED WETLAND AREA
	INDUSTRIAL/COMMERCIAL WASTE		WETLAND FRINGE SEEDING AREA
	WETLAND (NWI)		

ABBREVIATIONS

Ø	DIAMETER	NAD	NORTH AMERICAN DATUM
AC.	ACRES	NAVD	NORTH AMERICAN VERTICAL DATUM
AMSL	ABOVE MEAN SEA LEVEL	NO.	NUMBER
CL	CENTER LINE	NWI	NATIONAL WETLAND INVENTORY
CF	CUBIC FEET	RCP	REINFORCED CONCRETE PIPE
CP	CONTROL POINT	SY	SQUARE YARDS
CMP	CORRUGATED METAL PIPE	TYP.	TYPICAL
CY	CUBIC YARDS	CFS	CUBIC FEET PER SECOND
DIVISION	DIVISION OF SOIL CONSERVATION & WATER QUALITY	WB	WATER BODY
	EFFECTIVE CALCIUM CARBONATE EQUIVALENT	IS	INTERMITTENT STREAM
ECCE			
EL.	ELEVATION		
FT.	FEET		
H:V	HORIZONTAL TO VERTICAL		
LF	LINEAR FEET		
LIDAR	LIGHT DETECTION AND RANGING		
LS	LUMP SUM		
MAX.	MAXIMUM		
MIN.	MINIMUM		

FILE: 014-NORTHKING_2-N_NOTES

REVISED: 8/15/2025

ISSUED: 8/15/2025

CHKD. BY: KCW

DRAWN BY: CD

DESIGN BY: BK

TRIHYRO CORPORATION
1252 COMMERCE DRIVE
LARAMIE, WYOMING 82070
www.trihydro.com
(P) 307/745.7474 (F) 307/745.7729



IOWA DEPARTMENT OF AGRICULTURE
AND LAND STEWARDSHIP
DIVISION OF SOIL CONSERVATION AND
WATER QUALITY
HENRY A. WALLACE BUILDING
502 E. 9th STREET, DES MOINES, IOWA 50319
(515)281-4246



NORTH KING (IA-048)
AML RECLAMATION PROJECT

PROJECT NOTES LEGEND AND
QUANTITIES

SHEET

2 OF 16

014-NORTHKING_3-E_SITEREPAID.DWG



Image Cite: Shive-Hattery Field Photo, April 2024

2 CP1 LOCATION



Image Cite: Shive-Hattery Field Photo, April 2024

3 CP2 LOCATION

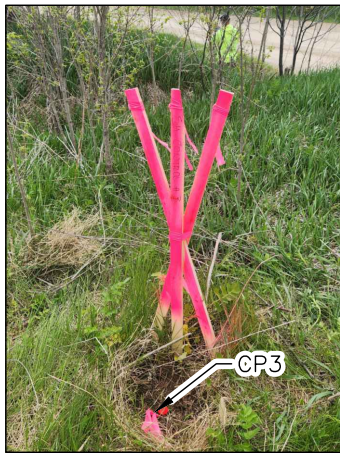


Image Cite: Shive-Hattery Field Photo, April 2024

4 CP3 LOCATION



Image Cite: Shive-Hattery Field Photo, April 2024

5 CP4 LOCATION



Image Cite: Shive-Hattery Field Photo, April 2024

6 CP5 LOCATION

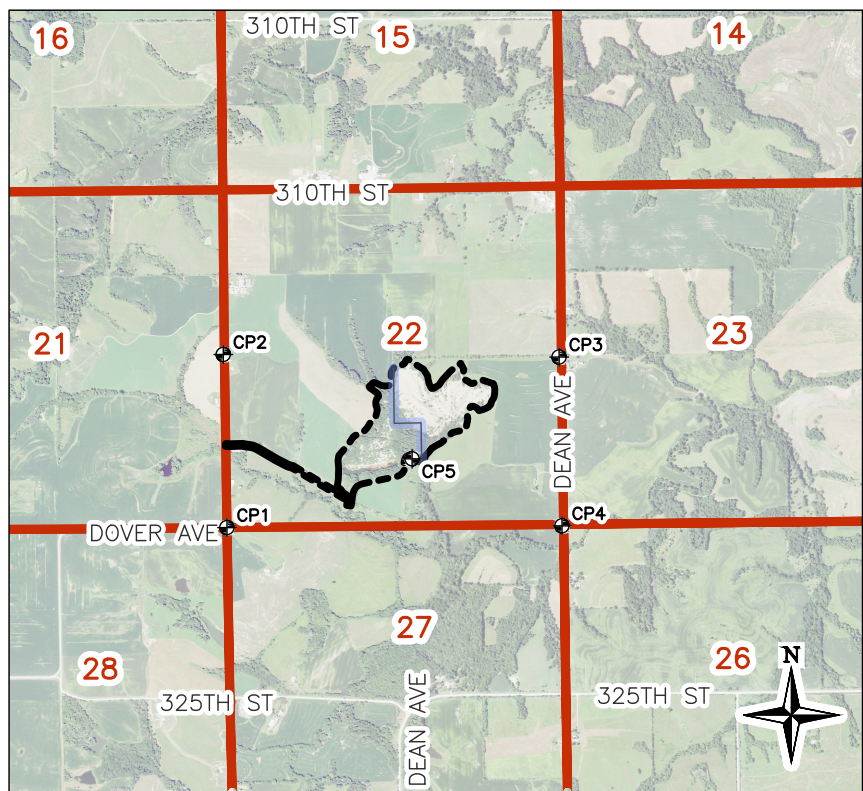
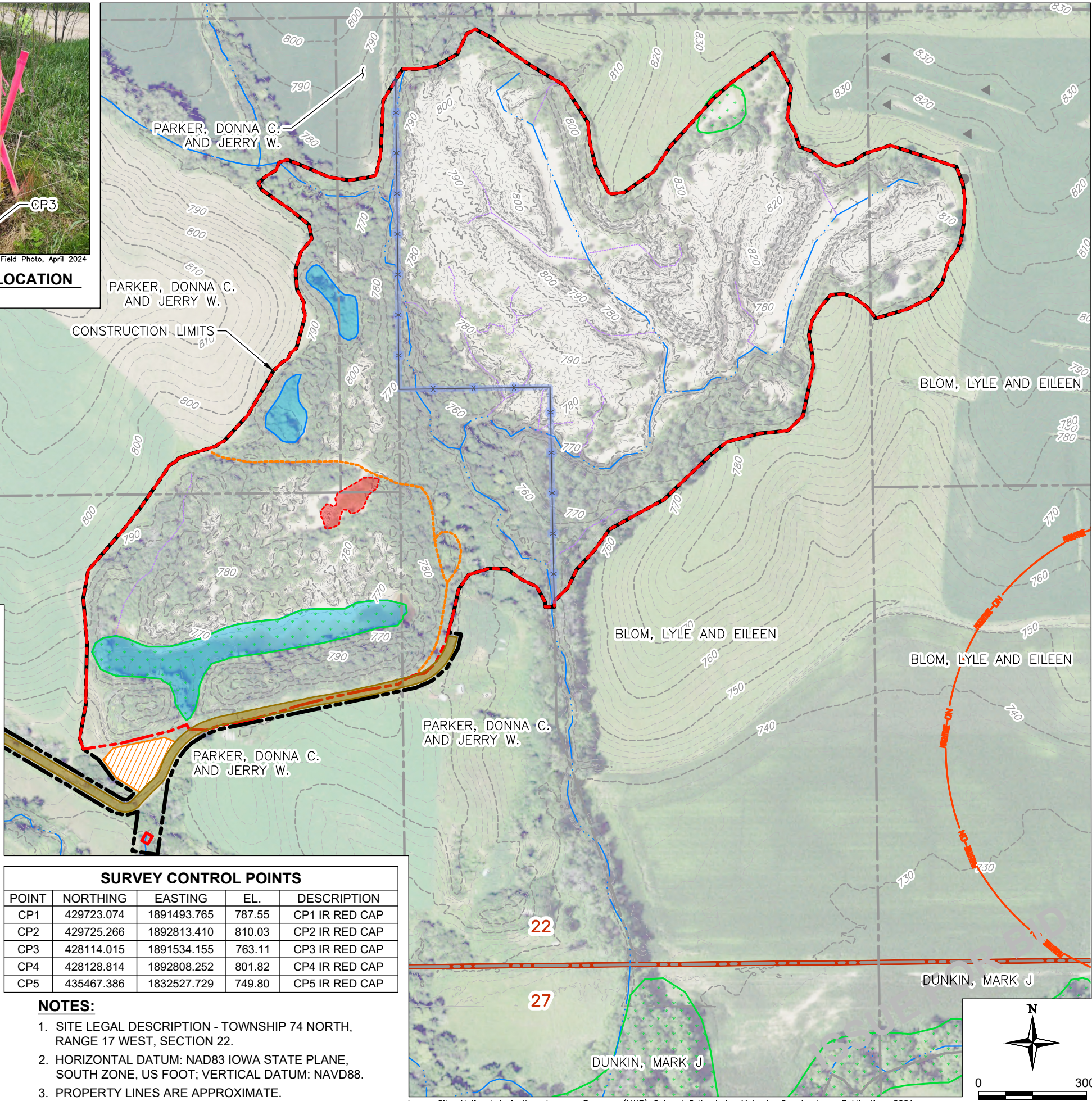


Image Citation: ©2024 Microsoft Corporation ©2024 DigitalGlobe ©CNES (2024) Distribution Airbus DS Bing Image

1 VICINITY MAP
SCALE: 1" = 3,000'

0 3,000'



SURVEY CONTROL POINTS

POINT	NORTHING	EASTING	EL.	DESCRIPTION
CP1	429723.074	1891493.765	787.55	CP1 IR RED CAP
CP2	429725.266	1892813.410	810.03	CP2 IR RED CAP
CP3	428114.015	1891534.155	763.11	CP3 IR RED CAP
CP4	428128.814	1892808.252	801.82	CP4 IR RED CAP
CP5	435467.386	1832527.729	749.80	CP5 IR RED CAP

NOTES:

- SITE LEGAL DESCRIPTION - TOWNSHIP 74 NORTH, RANGE 17 WEST, SECTION 22.
- HORIZONTAL DATUM: NAD83 IOWA STATE PLANE, SOUTH ZONE, US FOOT; VERTICAL DATUM: NAVD88.
- PROPERTY LINES ARE APPROXIMATE.

Image Cite: National Agriculture Imagery Program (NAIP) Colored Orthophoto, Mahaska County, Iowa, Publication: 2021

FILE: 014-NORTHKING_3-E_SITEREPAID

REVISED: 8/15/2025

ISSUED: 8/15/2025

CHKD. BY: KCW

DRAWN BY: CD

DESIGN BY: BK

TRIHYDRO CORPORATION
1252 COMMERCE DRIVE
LARAMIE, WYOMING 82070
www.trihydro.com
(P) 307/745.7474 (F) 307/745.7729



IOWA DEPARTMENT OF AGRICULTURE
AND LAND STEWARDSHIP
DIVISION OF SOIL CONSERVATION AND
WATER QUALITY
HOOVER BUILDING
1305 E WALNUT ST. DES MOINES, IA 50319
(515) 281-4246



NORTH KING (IA-048)
AML RECLAMATION PROJECT

SITE OVERVIEW AND CONTROL

SHEET
3 OF 16

EXISTING STREAM SUMMARY		
STREAM ID	LENGTH (LF)	FATE
IS-1	376	MITIGATE
IS-2	1,092	BACKFILL AND REPLACE
IS-3	1,731	MITIGATE
IS-4	1,908	BACKFILL AND REPLACE
TOTAL	5,107	

EXISTING WETLAND SUMMARY		
WETLAND ID	SURFACE AREA (AC.)	FATE
WL-1	0.29	REPLACE
WL-2	1.93	REPLACE
TOTAL	2.22	

- NOTES:**
1. SITE LEGAL DESCRIPTION - TOWNSHIP 74 NORTH, RANGE 17 WEST, SECTION 22.
 2. HORIZONTAL DATUM: NAD83 IOWA STATE PLANE, SOUTH ZONE, US FOOT; VERTICAL DATUM: NAVD88.
 3. PROPERTY LINES ARE APPROXIMATE.
 4. UNKNOWN UTILITIES WITHIN CONSTRUCTION LIMITS. THE CONTRACTOR SHALL COMPLETE UTILITY LOCATES PRIOR TO COMMENCING CONSTRUCTION.
 5. CLEARING LIMITS ARE SHOWN AS THE PROPOSED GRADING LIMITS.

EXISTING WATER BODY SUMMARY						
POND ID	SURFACE AREA (AC.)	MAX. WATER DEPTH (FT.)	MIN. MUCK THICKNESS (FT.)	ESTIMATED VOLUME (CY)	pH (4/05/24)	FATE
WB-1	0.28	0.0	0.0	0	N/A	BACKFILL
WB-2	0.31	0.0	0.0	0	N/A	BACKFILL
WB-3	1.93	6.4	4.1	9356	2.9	DEWATER & BACKFILL
TOTAL	2.52					

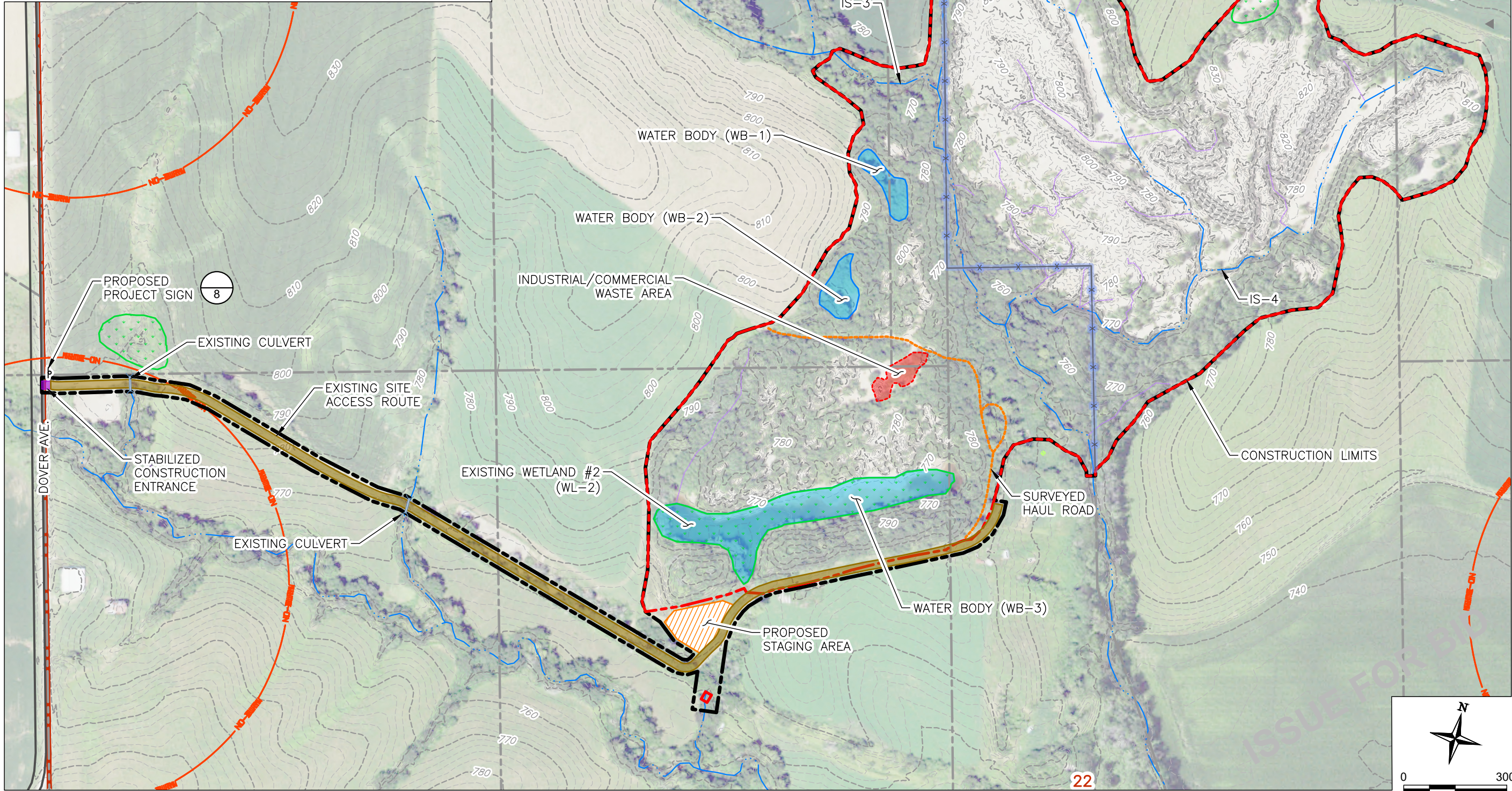


Image Cite: National Agriculture Imagery Program (NAIP) Colored Orthophoto, Mahaska County, Iowa, Publication: 2021

FILE: 014-NORTHKING_4-E_PRERECLAMATION

REVISED: 8/15/2025

ISSUED: 8/15/2025

CHKD. BY: KCW

DRAWN BY: CD

DESIGN BY: BK

IOWA DEPARTMENT OF AGRICULTURE
AND LAND STEWARDSHIP
DIVISION OF SOIL CONSERVATION AND
WATER QUALITY
HOOVER BUILDING
1305 E WALNUT ST. DES MOINES, IA 50319
(515)281-4246



NORTH KING (IA-048)
AML RECLAMATION PROJECT
SITE SITUATION PLAN AND
FEATURES

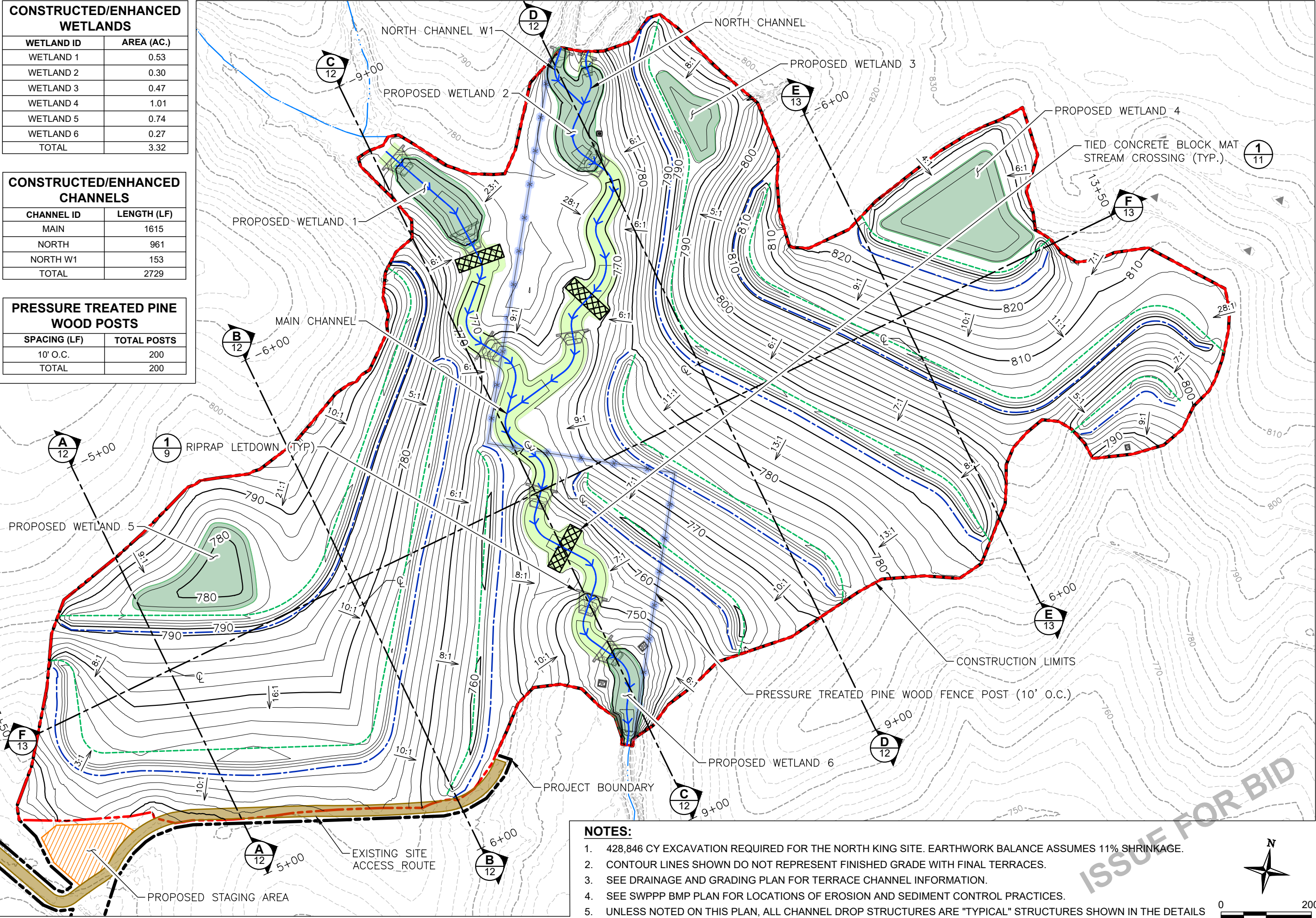
TRIHYDRO CORPORATION
1252 COMMERCE DRIVE
LARAMIE, WYOMING 82070
www.trihydro.com
(P) 307/745.7474 (F) 307/745.7729



CONSTRUCTED/ENHANCED WETLANDS	
WETLAND ID	AREA (AC.)
WETLAND 1	0.53
WETLAND 2	0.30
WETLAND 3	0.47
WETLAND 4	1.01
WETLAND 5	0.74
WETLAND 6	0.27
TOTAL	3.32

CONSTRUCTED/ENHANCED CHANNELS	
CHANNEL ID	LENGTH (LF)
MAIN	1615
NORTH	961
NORTH W1	153
TOTAL	2729

PRESSURE TREATED PINE WOOD POSTS	
SPACING (LF)	TOTAL POSTS
10' O.C.	200
TOTAL	200



- NOTES:**
- 428,846 CY EXCAVATION REQUIRED FOR THE NORTH KING SITE. EARTHWORK BALANCE ASSUMES 11% SHRINKAGE.
 - CONTOUR LINES SHOWN DO NOT REPRESENT FINISHED GRADE WITH FINAL TERRACES.
 - SEE DRAINAGE AND GRADING PLAN FOR TERRACE CHANNEL INFORMATION.
 - SEE SWPPP BMP PLAN FOR LOCATIONS OF EROSION AND SEDIMENT CONTROL PRACTICES.
 - UNLESS NOTED ON THIS PLAN, ALL CHANNEL DROP STRUCTURES ARE "TYPICAL" STRUCTURES SHOWN IN THE DETAILS

DESIGN BY: BK DRAWN BY: CD CHKD. BY: KCW ISSUED: 8/15/2025 REVISED: 8/15/2025 FILE: 014-NORTHKING_5-P_GRADING

NORTH KING (IA-048)
AML RECLAMATION PROJECT
GRADING PLAN OVERVIEW

IOWA DEPARTMENT OF AGRICULTURE
AND LAND STEWARDSHIP
DIVISION OF SOIL CONSERVATION AND
WATER QUALITY
HOOVER BUILDING
1305 E WALNUT ST. DES MOINES, IA 50319
(515)281-4246



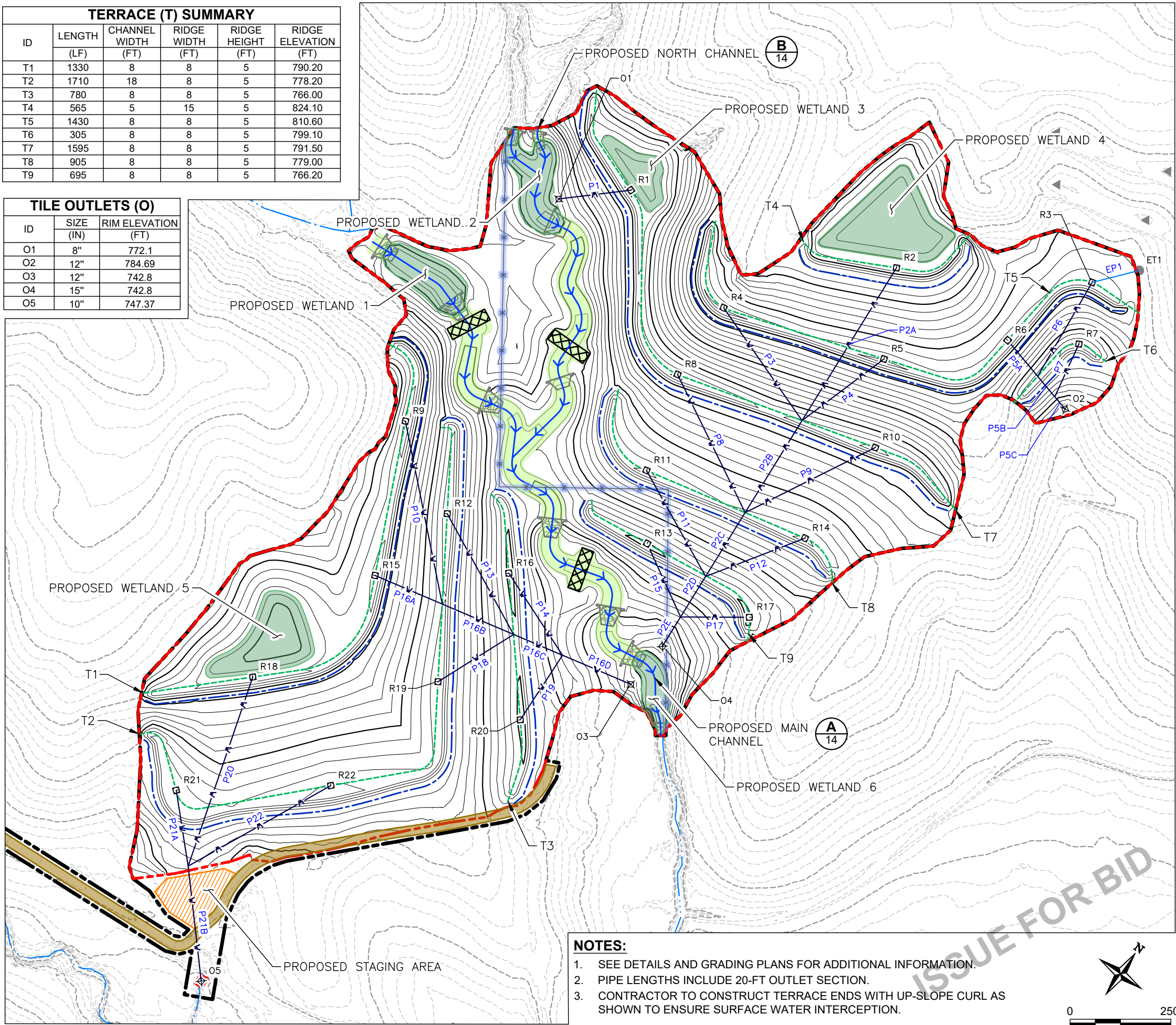
TRIHYDRO CORPORATION
1252 COMMERCE DRIVE
LARAMIE, WYOMING 82070
www.trihydro.com
(P) 307/745.7474 (F) 307/745.7729

PIPES (P) SUMMARY				
ID	LENGTH (LF)	DIA. (IN)	MATERIAL	SLOPE (%)
EP1	121'	8"	DWPE	6.19%
P1	180'	8"	DWPE	4.67%
P2A	447'	8"	DWPE	6.92%
P2B	269'	10"	DWPE	4.56%
P2C	187'	10"	DWPE	7.59%
P2D	118'	12"	DWPE	7.62%
P2E	86'	15"	DWPE	7.62%
P3	341'	8"	DWPE	5.22%
P4	255'	8"	DWPE	7.00%
P5A	117'	8"	DWPE	7.41%
P5B	66'	12"	DWPE	4.92%
P5C	40'	12"	DWPE	14.84%
P6	269'	12"	DWPE	3.51%
P7	144'	8"	DWPE	1.32%
P8	382'	8"	DWPE	2.76%
P9	361'	8"	DWPE	2.86%
P10	463'	8"	DWPE	1.99%
P11	302'	8"	DWPE	4.16%
P12	264'	8"	DWPE	4.74%
P13	342'	8"	DWPE	3.37%
P14	243'	8"	DWPE	1.43%
P15	200'	8"	DWPE	4.62%
P16A	181'	8"	DWPE	5.08%
P16B	193'	10"	DWPE	6.99%
P16C	132'	10"	DWPE	3.80%
P16D	184'	12"	DWPE	6.41%
P17	171'	8"	DWPE	5.42%
P18	222'	8"	DWPE	5.20%
P19	192'	8"	DWPE	1.82%
P20	496'	8"	DWPE	3.01%
P21A	190'	10"	DWPE	2.51%
P21B	287'	10"	DWPE	5.90%
P22	406'	8"	DWPE	1.17%
Total	7851'			

ID	SIZE	TYPE	TERRACE FLOWLINE/RIM ELEV.	INVERT ELEV.
	(IN)		(FT)	(FT)
Column 1	Column 2	Column3	Column4	Column5
R1	8"	PLASTIC	784.00	780.50
R2	8"	PLASTIC	816.53	813.03
R3	10"	PLASTIC	804.32	800.82
R4	6"	PLASTIC	803.51	800.01
R5	6"	PLASTIC	803.51	800.01
R6	8"	PLASTIC	804.15	800.65
R7	8"	PLASTIC	793.52	790.02
R8	6"	PLASTIC	784.00	780.50
R9	8"	PLASTIC	783.25	779.75
R10	6"	PLASTIC	783.78	780.28
R11	6"	PLASTIC	771.86	768.36
R12	8"	PLASTIC	772.11	768.61
R13	6"	PLASTIC	759.59	756.09
R14	8"	PLASTIC	771.86	768.36
R15	8"	PLASTIC	783.25	779.75
R16	8"	PLASTIC	759.08	755.58
R17	6"	PLASTIC	759.59	756.09
R18	8"	PLASTIC	782.70	779.20
R19	8"	PLASTIC	772.11	768.61
R20	8"	PLASTIC	759.08	755.58
R21	6"	PLASTIC	771.70	768.20
R22	6"	PLASTIC	772.57	769.07

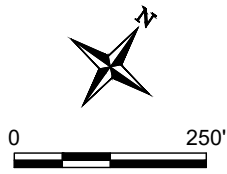
TERRACE (T) SUMMARY					
ID	LENGTH	CHANNEL WIDTH	RIDGE WIDTH	RIDGE HEIGHT	RIDGE ELEVATION
	(LF)	(FT)	(FT)	(FT)	(FT)
T1	1330	8	8	5	790.20
T2	1710	18	8	5	778.20
T3	780	8	8	5	766.00
T4	565	5	15	5	824.10
T5	1430	8	8	5	810.60
T6	305	8	8	5	799.10
T7	1595	8	8	5	791.50
T8	905	8	8	5	779.00
T9	695	8	8	5	766.20

TILE OUTLETS (O)		
ID	SIZE	RIM ELEVATION
	(IN)	(FT)
O1	8"	772.1
O2	12"	784.69
O3	12"	742.8
O4	15"	742.8
O5	10"	747.37



NOTES:

1. SEE DETAILS AND GRADING PLANS FOR ADDITIONAL INFORMATION.
2. PIPE LENGTHS INCLUDE 20-FT OUTLET SECTION.
3. CONTRACTOR TO CONSTRUCT TERRACE ENDS WITH UP-SLOPE CURL AS SHOWN TO ENSURE SURFACE WATER INTERCEPTION.



FILE: 014-NORTHKING_6-P_GRADINGDRAINAGE

REVISÉ: 8/15/2025

ED: 8/15/2025

CHKD. BY: KCW	IS
---------------	----

DESIGN BY: BK	DRAWN BY: CD
---------------	--------------

Journal Pre-proof

TRIHEDRO CORPORATION
1252 COMMERCE DRIVE
LARAMIE, WYOMING 82070
www.trihydro.com
(P) 307/745.7474 (F) 307/745.7729



U.S. DEPARTMENT OF AGRICULTURE
AND LAND STEWARDSHIP
DIVISION OF SOIL CONSERVATION AND
WATER QUALITY
HOOVER BUILDING
1305 E WALNUT ST., DES MOINES, IA 50319



**NORTH KING (IA-048)
AML RECLAMATION PROJECT**

DRAINAGE AND GRADING PLAN

SHEET

6 OF 16