

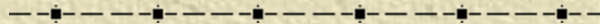


Iowa's Watershed Management Authorities

Partnerships for Water Quality
Improvement and Flood Risk Reduction

Watershed Planning Advisory Council

September 26, 2014



Overview

- ✦ Background on WMAs
- ✦ Introduction to four WMAs
- ✦ Panel discussion
- ✦ Q & A



What is a WMA?

- ✦ Formal agreement (Chapter 28E) amongst one or more political subdivisions
 - Cities, Counties, SWCDs
- ✦ Allows for cooperation at watershed scale
- ✦ Activities include:
 - Watershed planning & management
 - Education
 - Grant writing & administration

2010 – Watershed Management Legislation

- ✦ HF 2459 – Added provisions for WMA formation to the Surface Water Protection & Flood Mitigation Act
- ✦ Other provisions included:
 - Watershed Planning Advisory Council
 - Watershed Demonstration Pilot Projects (Iowa Flood Center)



WMA Activities

✦ Iowa Code Chapter 466B Subchapter II

✦ WMAs May:

- Assess flood risk
- Assess water quality
- Assess options for reducing flood risk and improving water quality
- Monitor federal flood risk planning and activities
- Educate residents of the watershed regarding water quality and flood risks

✦ WMAs Shall Not:

- Acquire property by eminent domain

Why Form a WMA

- ✦ Allows water resource problems to be addressed at the watershed scale
- ✦ Develop partnerships to leverage resources and create efficiencies
- ✦ Build support for conservation in urban and rural areas



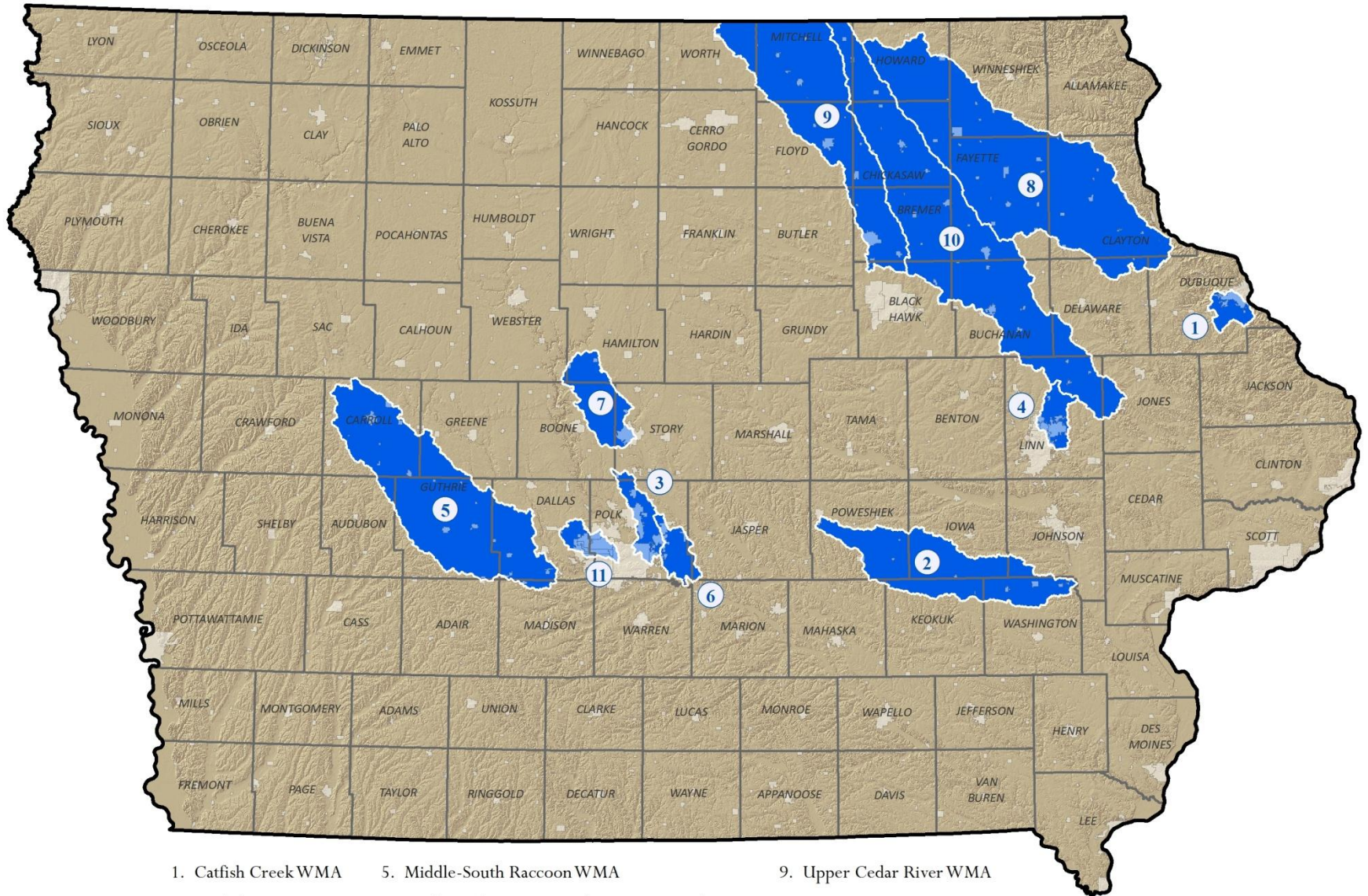
How to Form a WMA

- ✦ Organize within one single HUC-8 watershed
- ✦ Notify all eligible entities with invitation to participate
- ✦ Create a Chapter 28E agreement, including a map
- ✦ A single entity can be involved in multiple WMAs, but participation is not required
- ✦ The WMA is governed by a Board of Directors

Timeline

- ✦ 2010 – Legislation Enacted
- ✦ 2011 – IEDA / CDBG funding provided to establish six WMA pilots
- ✦ 2012 - IEDA / CDBG Funding for Comprehensive Plans
- ✦ 2013 – IDNR Funding for Comp Plans
- ✦ 2014 – IDNR Funding for Comp Plans

Watershed Management Authorities with 28E Agreements



- | | | |
|-----------------------|---------------------------------------------|----------------------------------|
| 1. Catfish Creek WMA | 5. Middle-South Raccoon WMA | 9. Upper Cedar River WMA |
| 2. English River WMA | 6. Mud Creek, Spring Creek & Camp Creek WMA | 10. Upper Wapsipinicon River WMA |
| 3. Fourmile Creek WMA | 7. Squaw Creek WMA | 11. Walnut Creek WMA |
| 4. Indian Creek WMA | 8. Turkey River WMA | |

Catfish Creek WMA



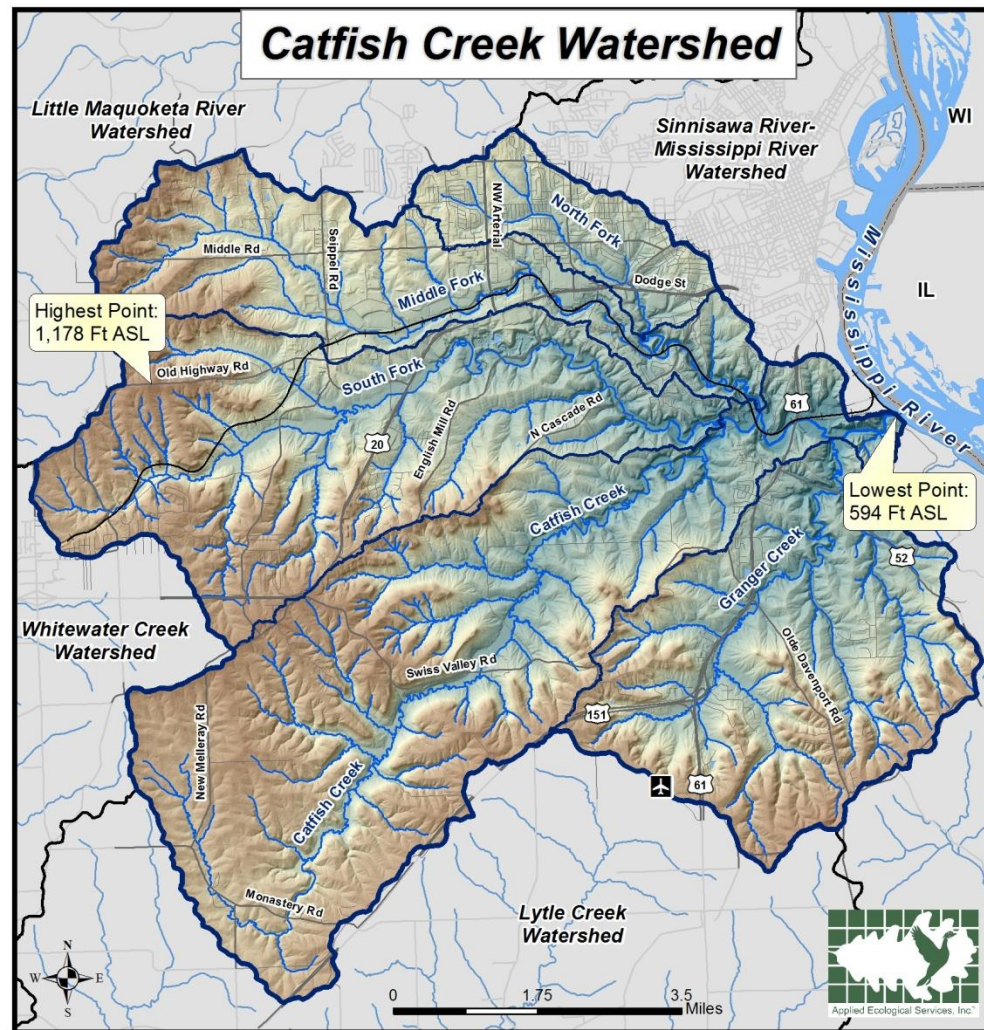
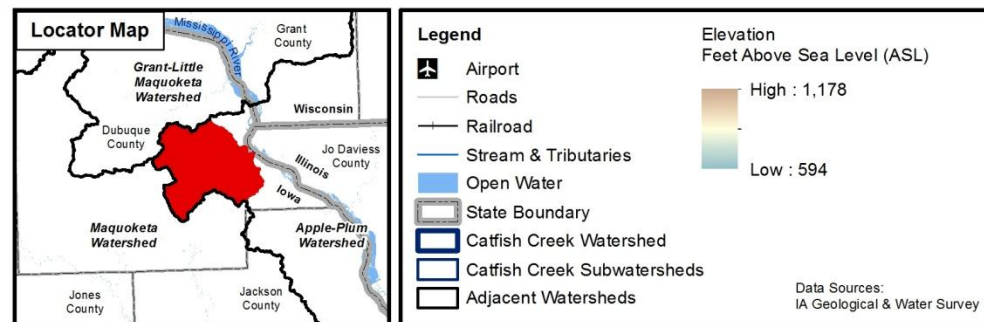


Figure X: Digital Elevation Model



WMA Members Include...

- ✦ City of Dubuque, City of Asbury, City of Peosta, City of Centralia
- ✦ Dubuque County
- ✦ Dubuque Soil and Water Conservation



History

- ✦ Formation of WMA in June 2012
- ✦ Comprehensive planning dollars awarded in Dec 2012
- ✦ Scheduled Completion of WMP Dec 2014
- ✦ Grant applications: SRF Sponsorship project; RCPP for the Driftless Region



Catfish Creek WMA - Funding

✦ City of Dubuque, Dubuque County, and the DSWCD:

- Staff to support administration and Overall Planning (MS4 coordinator and Urban Conservationist)

✦ Grant Funding:

- WMA Creation, Watershed Planning, and Project dollars

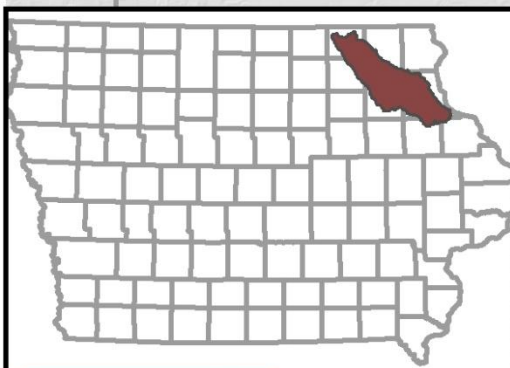
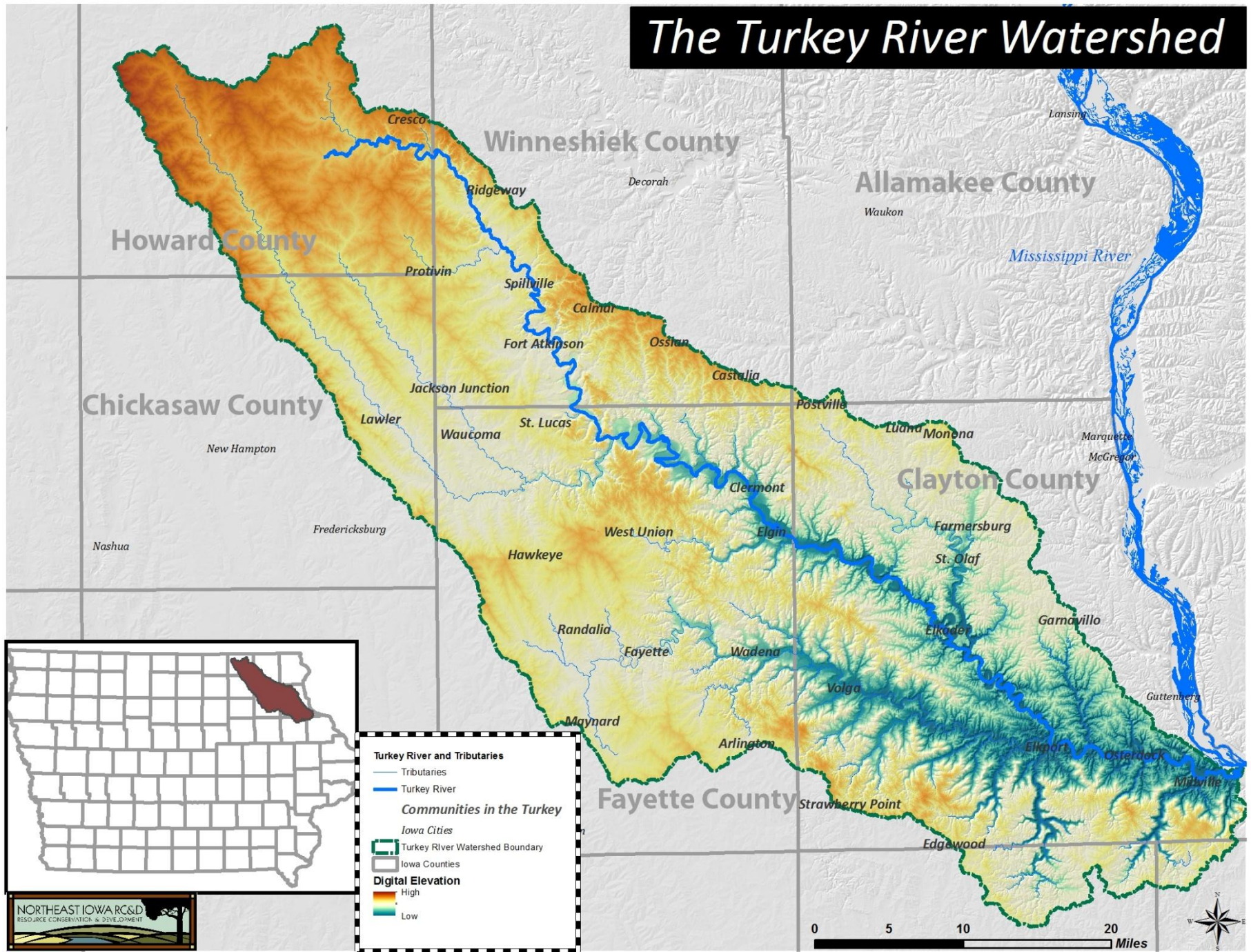
Catfish Creek WMA - Accomplishments

- ✦ Upcoming completion of the WMP
- ✦ Public education efforts
- ✦ County Wide post construction ordinance & creation of the Unified Development Code for the City of Dubuque

Turkey River WMA



The Turkey River Watershed



	Turkey River and Tributaries
	Tributaries
	Turkey River
	Communities in the Turkey
	Iowa Cities
	Turkey River Watershed Boundary
	Iowa Counties
	Digital Elevation
	High
	Low



WMA Members Include...

✦ 23 Cities, including:

- West Union, Strawberry Point, Postville, Fayette, Elkader

✦ 5 Counties:

- Fayette, Chickasaw, Clayton, Howard, Winneshiek

✦ 7 SWCDs

- Allamakee, Delaware, Fayette, Chickasaw, Clayton, Howard, Winneshiek



History

- ✦ Formation of WMA in June 2012
- ✦ IEDA Planning Grant for Flood Reduction – 2012
- ✦ IDNR Planning Grant for Water Quality – 2013
- ✦ Iowa Flood Center selects the TRWMA for Iowa Watershed Demonstration Project (Phases I & II)
- ✦ Additional grants obtained that help solidify WMA's relevance



Turkey River WMA - Funding

✦ Many different funding sources since 2012, including:

- IEDA
- IDNR
- Iowa Flood Center / IIHR
- Private foundations
- Water Quality Initiative (State of Iowa)
- Conservation Innovation Grant (Iowa NRCS)

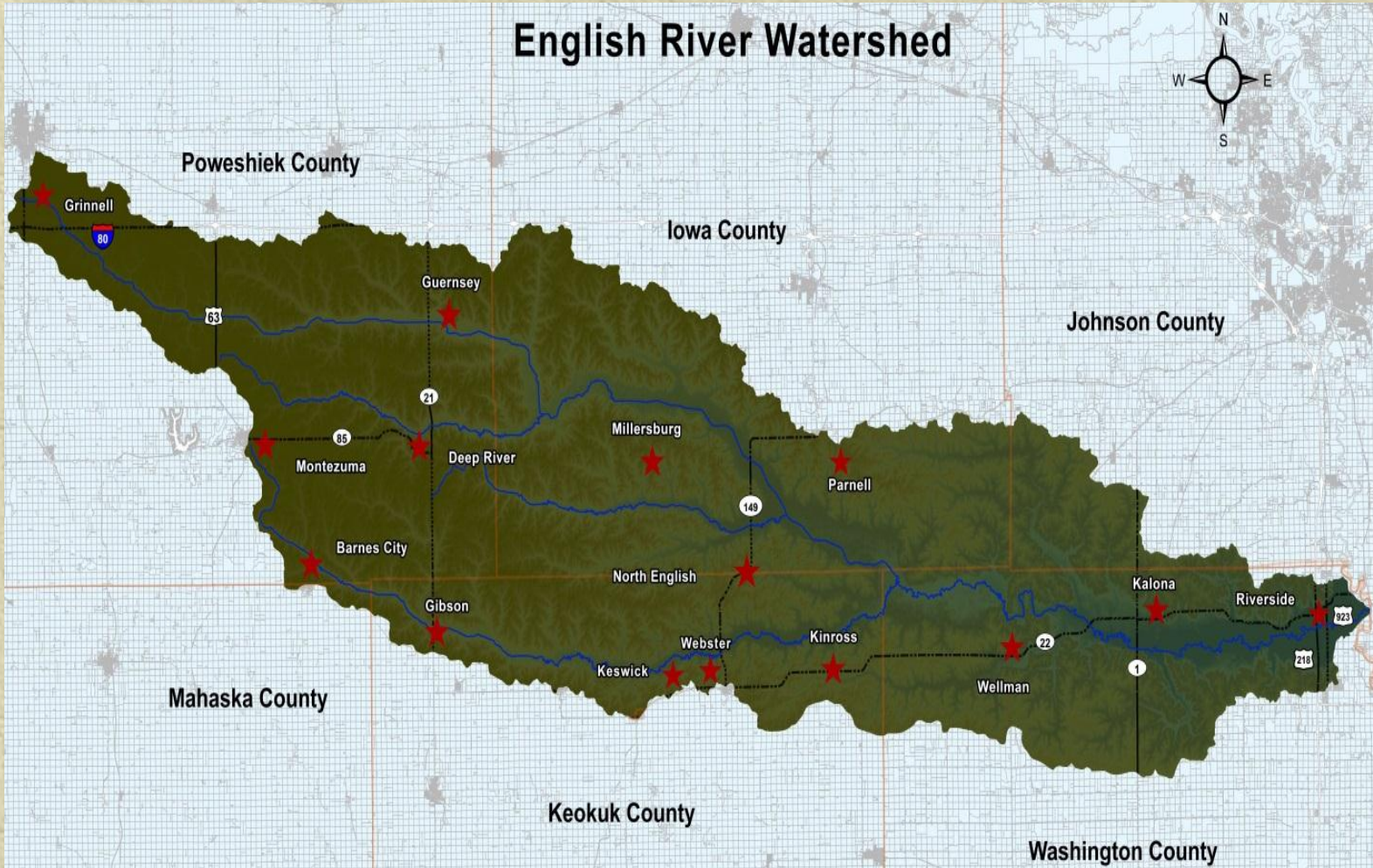
Turkey River WMA - Accomplishments

- ✦ Quarterly WMA Board meetings & "Learning Sessions"
- ✦ NASA (working with IFC and IIHR) involves TRW landowners TRW in a two-month rainfall study
- ✦ Survey of 1,500 urban and rural residents
- ✦ RC&D and partners engage landowners in rainfall, soil moisture, & in-field tile line monitoring
- ✦ TRW community of Monona completes SRF Clean Water Loan Program

English River WMA



English River Watershed



WMA Members Include...

✦ Cities:

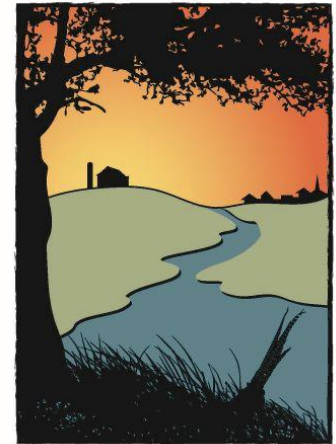
- Barnes City, Grinnell, Kalona, Keswick, Wellman, Riverside

✦ Counties:

- Keokuk, Washington

✦ SWCDs:

- Iowa, Johnson, Keokuk, Poweshiek, Washington



ENGLISH RIVER
WATERSHED

History

- ✦ Officially formed in August, 2013
- ✦ Awarded funding for Comp Plan (2013)
 - Watershed Assessment
 - Educational Events
 - Public Engagement
 - Plan completion slated for June 2015

English River WMA - Funding

- ✦ Iowa Department of Natural Resources
- ✦ Washington County Riverboat Foundation
- ✦ Kalona Local Options Sales Tax
- ✦ City of Riverside
- ✦ Kalona Economic Development Group
- ✦ City of Wellman
- ✦ Riverside Casino & Golf Resort
- ✦ Hills Bank & Trust
- ✦ Freedom Security Bank
- ✦ County of Washington

English River WMA - Accomplishments

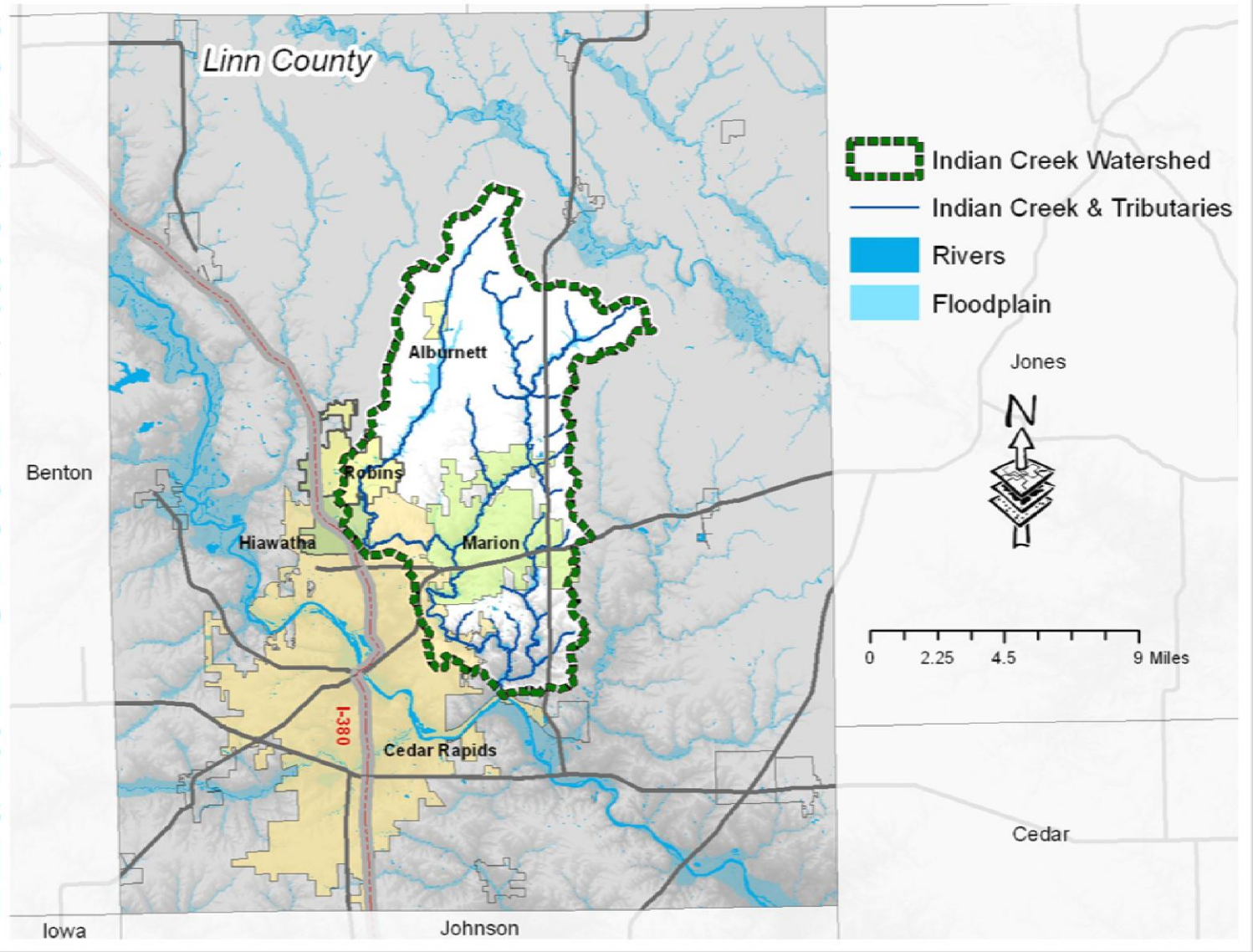
- ✦ Engagement of ½ of all eligible entities in ERWMA during first year “on the ground”
- ✦ Engagement of key area stakeholders from both urban and farming backgrounds
- ✦ Initial assessments nearly complete (hydrological modeling, social survey, inventory, water quality)



Indian Creek WMA



Indian Creek Watershed



Members Include...

✦ Cities:

– Marion, Cedar Rapids, Robins, Hiawatha

✦ Linn County

✦ Linn Soil & Water Conservation District



Indian Creek

Watershed Management Authority

COOPERATION • FLOOD MANAGEMENT • CLEAN WATER

History

- ✦ August 2012 – Official WMA Formation
- ✦ 2012 – 2014 - watershed assessment including hydrologic modeling, RASCAL assessment, water quality monitoring, land cover survey, social assessment, and urban issues assessment.
- ✦ Mid to late 2014 - goal setting process with stakeholder engagement (lunch & learns).
- ✦ Present – refine goals & develop implementation plan
- ✦ Dec. 2014 – draft plan presented for public comment
- ✦ Early 2015 – plan adoption

Indian Creek WMA - Funding

- ✦ WMA Pilot funding through IEDA
- ✦ WMA Pilot Funding Phase 2 through IEDA
- ✦ DNR WMA planning funding
- ✦ Linn SWCD
- ✦ City of Marion
- ✦ ECICOG



Indian Creek WMA - Accomplishments

- ✦ WMA formation with almost 100% participation
- ✦ Watershed level assessment completed
- ✦ Social assessment completed (including sample of farmer surveys)
- ✦ Stakeholder engagement (held three lunch & learn events attended by 40ish people each time) in developing goals and action steps for the plan



Panel Discussion

Closing Comments

✦ How the WPAC can support WMAs

Questions?

- ✦ Mary Beth Stevenson – IDNR
 - Marybeth.stevenson@dnr.iowa.gov
- ✦ Jody Bailey – English River WMA
 - jbailey@cityofkalona.org
- ✦ Jennifer Fencel – Indian Creek WMA
 - jennifer.fencel@ecicog.org
- ✦ Lora Friest – Turkey River WMA
 - lora.friest@northeastiowarcd.org
- ✦ Dean Mattoon – Catfish Creek WMA
 - dmattoon@cityofdubuque.org



- ✦ For more WMA information, visit <http://www.iowadnr.gov/Environment/WaterQuality/WatershedManagementAuthorities.aspx>